

# EDUCATION

## Results of Tests of Adult Basic Education (TABE) For Correctional Education (CE) Students in FY 2002-03

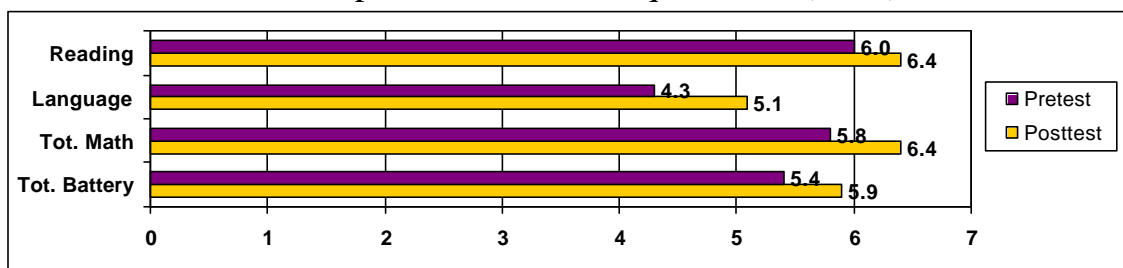
**Purpose:** As per Section 944.801(3)(f), F.S., this page summarizes the average change in literacy levels of Correctional Education (CE) students from July 1, 2002 to June 30, 2003.

**Methodology:** TABE tests administered to students during FY 2002-03 were scored using TestMate and the Advanced Module of the TestMate System (test scoring and reporting system). Inmate names and DC numbers were used to track those who had both pretest and posttest scores during this period. This summary includes all inmate students who, during this period, had at least one matched set of scores (pretest and posttest scores) in at least one subject area. A total of 3,601 students had matched scores for all three of the subject areas (Total Battery) of Reading, Language,

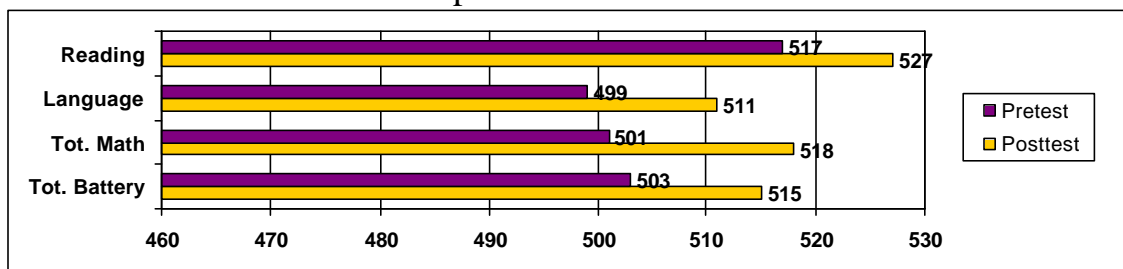
and Total Mathematics. The total sets of matched scores for each subject area were: (a) 3,831 for Reading, (b) 3,880 for Language, and (c) 4,295 for Total Mathematics.

**Results:** The three charts below show the average gains made in each subject in terms of grade equivalents (GE), scale scores, and normal curve equivalents (NCE), respectively. To be included, students had to have both a pretest and posttest. Gain was made in all three subject areas and for total battery. For an average of three months of instruction, the overall (total battery) gain was four points for the NCE scores and on average there was a 12-point increase in scale scores. This translates into five months gain (.5) in GE scores.

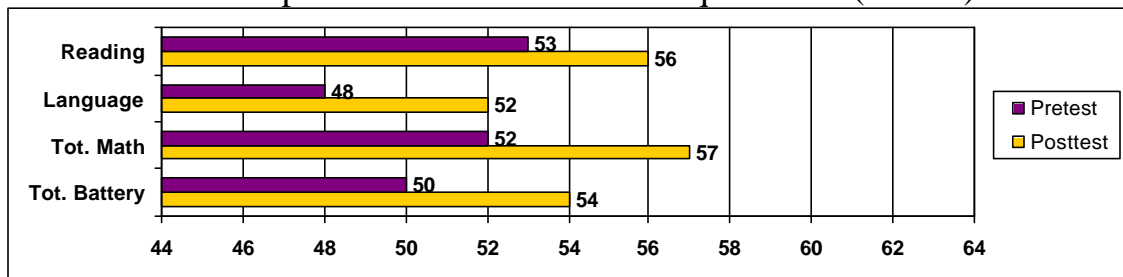
Gains Expressed in Grade Equivalents (GE's)



Gains Expressed in Scale Scores



Gains Expressed in Normal Curve Equivalents (NCE's)



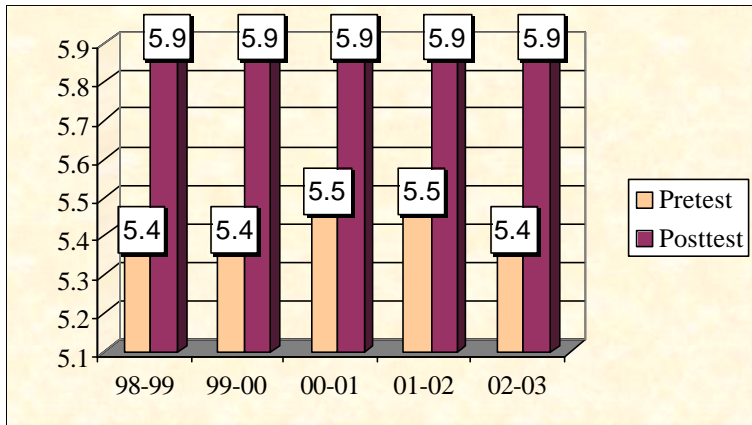
Reading (N=3,831), Language (N=3,880), Total Math (N=4,295), Total Battery (N=3,601)



# EDUCATION

## Over 1,200 Inmates Earned GED's in FY 2002-03

Change in Inmate Literacy Levels Over Five Years



- 1,112 inmates earned GED certificates while in the Florida prison system in FY 2002-03. An additional 126 had their GED's verified while in Florida prisons, meaning they earned their GED's elsewhere such as contract drug facilities, county jails or from other states.
- The number who enrolled in GED courses during the fiscal year was 2,262, and the completion rate for the year was 49%.
- 25,481 inmates participated in 26,073 courses during the fiscal year. "Number of courses" and "number of inmates" are different for adult education and vocational counts, since it is possible for a given inmate to be involved in more than one course in either program during the year.
- Note that none of the counts in these charts include program participation or certificates earned at private facilities.

### FY 2002-03 GED and Vocational Certificates Awarded

Types of Award Locations	GED Certificates Awarded	Vocational Certificates Awarded	Total Certificates Awarded
Correctional Institutions	999	2,460	3,459
Other DC Facilities*	113	36	149
Non-DC Entities**	126	0	126
<b>Total</b>	<b>1,238</b>	<b>2,496</b>	<b>3,734</b>

\* Other DC includes work release centers, work/forestry camps, road prisons and boot camps.

\*\* Non-DC includes contract drug facilities, counties, and other states.

### Participation in Correctional Education Classes in FY 2002-03

Enrollments*	Mandatory Literacy	Adult Basic Edu.	GED	Vocational	Total
Number of Courses	5,148	11,483	2,262	7,180	26,073
Number of Inmates	5,148	11,483	2,262	6,588	***25,481
<b>Completions**</b>					
Number of Courses	2,167	790	1,112	2,496	6,565
Number of Inmates	2,167	790	1,112	2,204	***6,273
<b>Other Exits**</b>					
Number of Courses	2,283	8,428	1,156	3,431	15,298
Number of Inmates	2,283	8,428	1,156	3,131	***14,998

\* "Enrollments" includes inmates enrolled as of 7/1/02 and new enrollments through 6/30/03.

\*\* "Completions" and "Other Exits" are from 7/1/02 through 6/30/03.

\*\*\* Inmates who participated in Mandatory Literacy, Adult Basic Education, GED and Vocational courses get counted for participation in all four programs.

"Completions" are defined as a CMP, ATT or CXS code on the DC32 screen for MLP and ABE participants, a GED certificate for course "9900026" participants, and a vocational certificate for vocational program participants.

"Other exits" are defined as any exit code on the DC 32 screen except for ATT, CXS and CMP.

