



James R. McDonough
Secretary

FLORIDA DEPARTMENT OF CORRECTIONS

INMATE ESCAPES

Fiscal Year 2006-2007



- Fiscal Year 2006-2007
 - Attempts
 - Escapes
 - Recaptures
- Short-term trends in Inmate Escapes
- Long-term trends in Inmate Escapes for Fiscal Years 1989-90 to 2006-07

Prepared by:
Florida Department of Corrections
Bureau of Research and Data Analysis
Inmate Information and Analysis Section
August 2007

Inmate Escape Report

(Fiscal Year 2006-07)

This report provides information for the Fiscal Year 2006-07 (July 2006 - June 2007) in reference to attempted escapes, escapes and recaptures from Florida's correctional facilities. This report summarizes the following:

- * Attempted escapes
- * Escapes by level, facility type, and facility type by region
- * Recaptures and recaptures within quarter, by time to recapture, and time to recapture by facility type
- * Escape rates and rates by region, and facility type by region
- * Escapes by facility type, by month
- * Escape rates by region, by quarter

For purposes of this report attempted escape and escape are defined as follows:

Attempted escape: Inmate is apprehended before completion of the escape act.

Escape: Unauthorized absence from the designated facility boundary or absence from any official assignment outside this boundary.

An escape will be further defined as one of the following levels:

Level I: Escape from non-secure environment, such as a community correctional center or an outside work squad, in which no Level III behaviors are exhibited.

Level II: Escape from a secure perimeter in which no Level III behaviors are exhibited.

Level III: Escape that involves hostages, weapons/tools, outside assistance, or violence during or after the escape.

An escape rate is defined as the number of escapes/(total population on the last day of the month for each month in the quarter/3)* 1,000.

A perimeter escape is defined as one initiated from inside the perimeter of a correctional facility other than a community release facility.

Summary:

The number of escapes increased from 122 in FY 2005-06 to 142 in FY 2006-07. All but five of the FY 2006-07 escapes were from work release/contract centers (96.5%). Except for three, all were the least serious type Level 1 escapes (97.9%). There was one escape from a correctional institution which occurred while the inmate was being transported. There were four escapes from a Work Camp/Road Prison. The one escape while the inmate was being transported was considered a breach of a secured perimeter.

Of the 142 escapes, 135 (95.1%) were recaptured by August 5, 2007. Of the 135 recaptures, 114 (84.4%) were recaptured within the quarter in which the escape occurred. Of the 114 recaptured within the quarter, 62 (54.4%) were recaptured within 24 hours of the escape.

The overall escape rate increased from 1.41 in FY 2005-06 to 1.57 in FY 2006-07. The escape rate for correctional institutions was 0.01 in FY 2006-07 which was the same as in FY 2005-06.

There were two attempted and foiled escapes from Florida correctional facilities during FY 2006-07.

Escapes (July 2006 - June 2007)

Escapes*	1st Quarter (Jul-Sep 2006)		2nd Quarter (Oct-Dec 2006)		3rd Quarter (Jan-Mar 2007)		4th Quarter (Apr-Jun 2007)		Fiscal Year 2006/2007	
Escapes	34		25		28		55		142	
Perimeter Escapes	1		0		0		0		1	
Level										
Level I	33	97.1%	24	96.0%	28	100.0%	54	98.2%	139	97.9%
Level II	1	2.9%	0	0.0%	0	0.0%	0	0.0%	1	0.7%
Level III	0	0.0%	1	4.0%	0	0.0%	1	1.8%	2	1.4%
Not Rated	0	0.0%	0	0.0%	0	0.0%	0	0.0%	0	0.0%
Facility Type										
Correctional Institutions	1	2.9%	0	0.0%	0	0.0%	0	0.0%	1	0.7%
Work Camps/Road Prisons	1	2.9%	0	0.0%	0	0.0%	3	5.5%	4	2.8%
Work Release/Contract Centers	32	94.1%	25	100.0%	28	100.0%	52	94.5%	137	96.5%
Facility Type by Region										
Correctional Institutions	1	2.9%	0	0.0%	0	0.0%	0	0.0%	1	0.7%
Region I	0	0.0%	0	0.0%	0	0.0%	0	0.0%	0	0.0%
Region II	0	0.0%	0	0.0%	0	0.0%	0	0.0%	0	0.0%
Region III	0	0.0%	0	0.0%	0	0.0%	0	0.0%	0	0.0%
Region IV	1	100.0%	0	0.0%	0	0.0%	0	0.0%	1	100.0%
Work Camps/Road Prisons	1	2.9%	0	0.0%	0	0.0%	3	5.5%	4	2.8%
Region I	0	0.0%	0	0.0%	0	0.0%	0	0.0%	0	0.0%
Region II	0	0.0%	0	0.0%	0	0.0%	0	0.0%	0	0.0%
Region III	1	100.0%	0	0.0%	0	0.0%	2	66.7%	3	75.0%
Region IV	0	0.0%	0	0.0%	0	0.0%	1	33.3%	1	25.0%
Work Release/Contract Centers	32	94.1%	25	100.0%	28	100.0%	52	94.5%	137	96.5%
Region I	2	6.3%	2	8.0%	0	0.0%	3	5.8%	7	5.1%
Region II	4	12.5%	3	12.0%	2	7.1%	7	13.5%	16	11.7%
Region III	6	18.8%	4	16.0%	9	32.1%	11	21.2%	30	21.9%
Region IV	20	62.5%	16	64.0%	17	60.7%	31	59.6%	84	61.3%

*Numbers may differ from previous reports as facilities may change types across time and the number and level of escape may be updated upon receipt of further information.

Recaptures (July 2006 - June 2007)

Recaptures*	1st Quarter (Jul-Sep 2006)		2nd Quarter (Oct-Dec 2006)		3rd Quarter (Jan-Mar 2007)		4th Quarter (Apr-Jun 2007)		Fiscal Year 2006/2007	
Escapes	34		25		28		55		142	
Recaptured	33	97.1%	25	100.0%	26	92.9%	51	92.7%	135	95.1%
Not Recaptured	1	2.9%	0	0.0%	2	7.1%	4	7.3%	7	4.9%
Recaptured Within Quarter	28	84.8%	20	80.0%	25	96.2%	41	87.2%	114	84.4%
Time to Recapture Within Quarter										
Less Than or Equal To 24 Hours	18	64.3%	11	55.0%	12	48.0%	21	51.2%	62	54.4%
Greater Than 24 Hours Within Quarter	10	35.7%	9	45.0%	13	52.0%	20	48.8%	52	45.6%
Recaptures Within Quarter by Facility Type										
Correctional Institutions	1	3.6%	0	0.0%	0	0.0%	0	0.0%	1	0.9%
Less Than or Equal To 24 Hours	1	100.0%	0	0.0%	0	0.0%	0	0.0%	1	100.0%
Greater Than 24 Hours	0	0.0%	0	0.0%	0	0.0%	0	0.0%	0	0.0%
Work Camps/Road Prisons	1	3.6%	0	0.0%	0	0.0%	3	7.3%	4	3.5%
Less Than or Equal To 24 Hours	0	0.0%	0	0.0%	0	0.0%	2	66.7%	2	50.0%
Greater Than 24 Hours	1	100.0%	0	0.0%	0	0.0%	1	33.3%	2	50.0%
Work Release/Contract Centers	26	92.9%	20	100.0%	25	100.0%	38	92.7%	109	95.6%
Less Than or Equal To 24 Hours	17	65.4%	11	55.0%	12	48.0%	19	50.0%	59	54.1%
Greater Than 24 Hours	9	34.6%	9	45.0%	13	52.0%	19	50.0%	50	45.9%

**The Recaptured/ Not Recaptured categories may change over time as past escapes are recaptured.

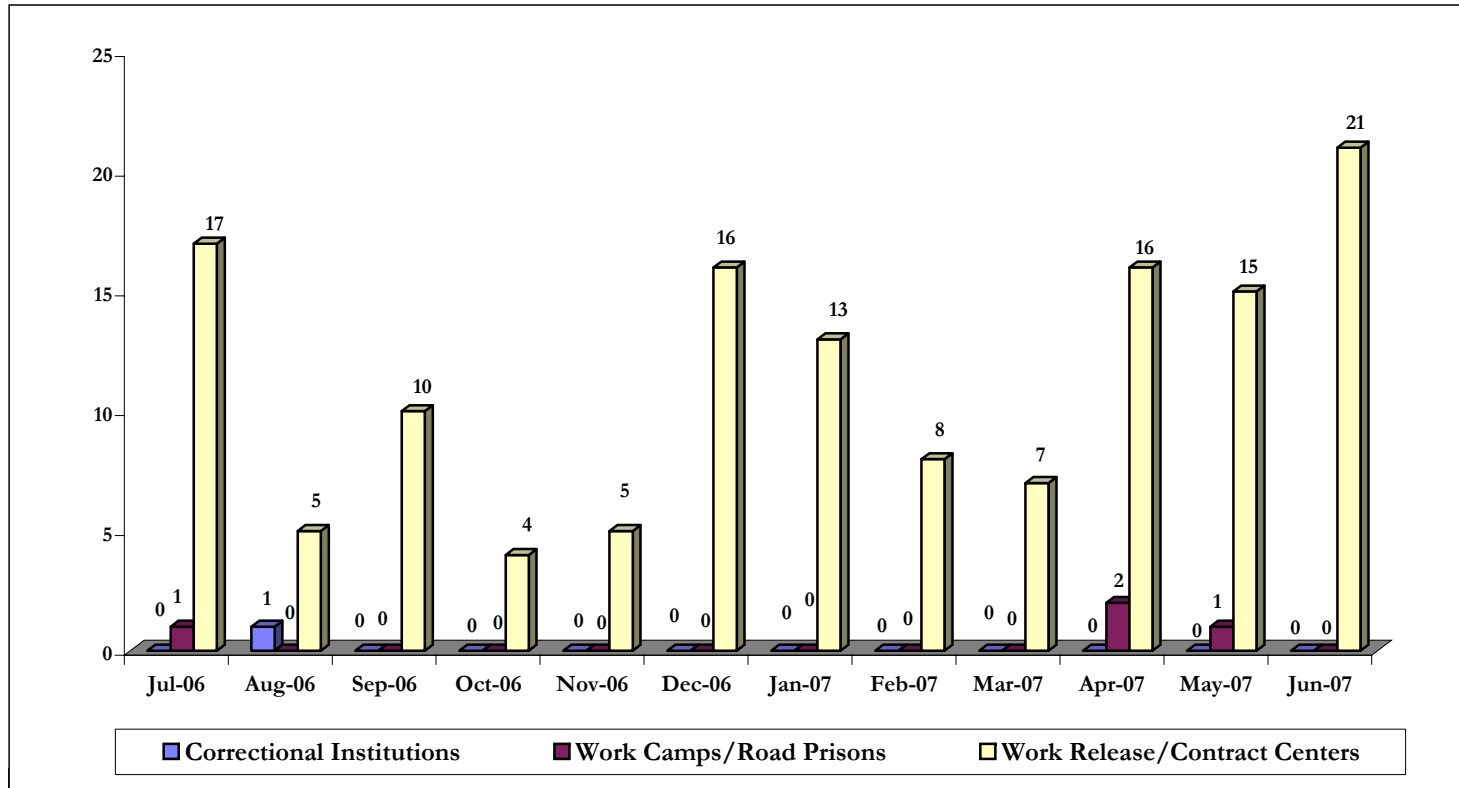
Breakdown of recaptured information is based on those escapes recaptured within the quarter in which the escape occurred.

Escape Rates (July 2006 - June 2007)

Escape Rate by Region*	1st Quarter (Jul-Sep 2006)	2nd Quarter (Oct-Dec 2006)	3rd Quarter (Jan-Mar 2007)	4th Quarter (Apr-Jun 2007)	Fiscal Year 2006/2007
Escapes	34	25	28	55	142
Escape Rate	0.38	0.28	0.31	0.60	1.57
Region					
Region I	0.08	0.08	0.00	0.11	0.26
Region II	0.16	0.12	0.08	0.27	0.62
Region III	0.40	0.22	0.51	0.73	1.86
Region IV	1.04	0.78	0.83	1.54	4.20
Facility Type by Region					
Correctional Institutions	0.01	0.00	0.00	0.00	0.01
Region I	0.00	0.00	0.00	0.00	0.00
Region II	0.00	0.00	0.00	0.00	0.00
Region III	0.00	0.00	0.00	0.00	0.00
Region IV	0.06	0.00	0.00	0.00	0.06
Work Camps/Road Prisons	0.09	0.00	0.00	0.28	0.37
Region I	0.00	0.00	0.00	0.00	0.00
Region II	0.00	0.00	0.00	0.00	0.00
Region III	0.46	0.00	0.00	0.91	1.38
Region IV	0.00	0.00	0.00	0.66	0.06
Work Release/Contract Centers	10.75	8.22	9.16	16.61	44.89
Region I	6.69	6.69	0.00	10.00	23.39
Region II	8.03	5.91	3.96	13.94	31.79
Region III	5.77	3.72	8.20	10.08	27.89
Region IV	17.50	13.78	14.72	25.02	71.52

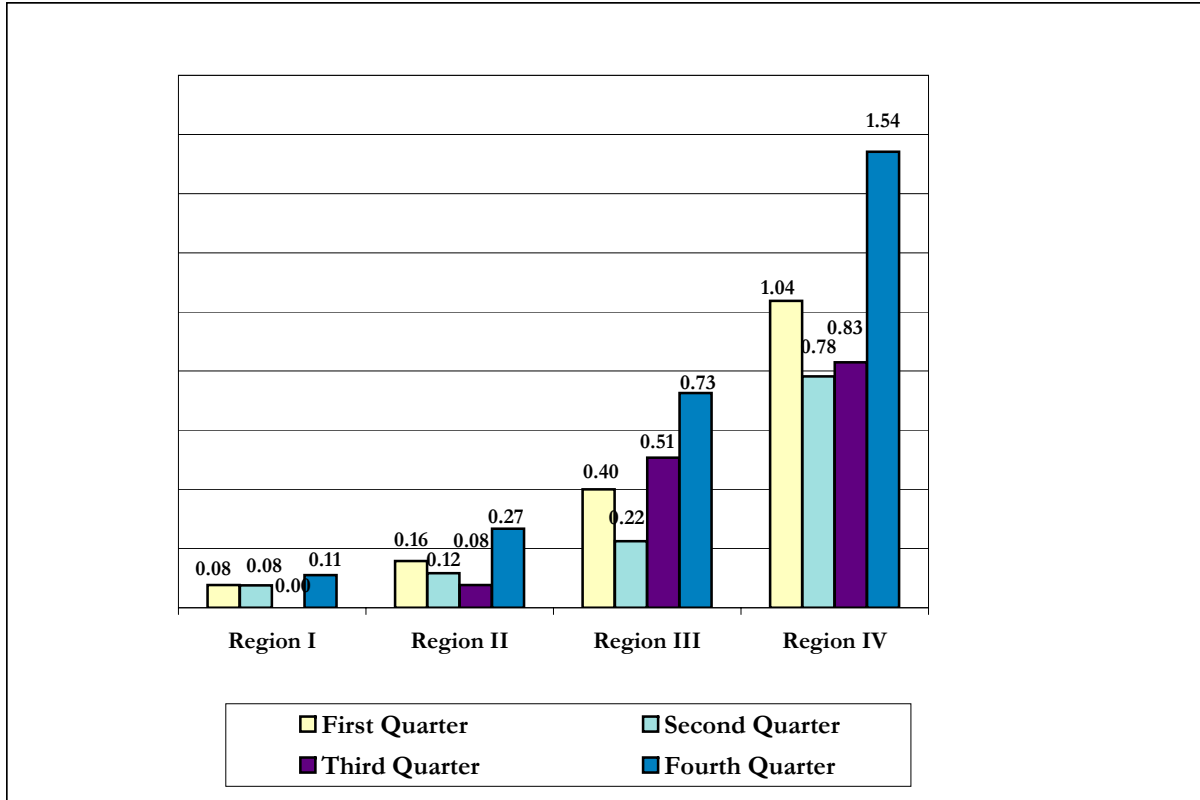
*Escape rate defined as the number of escapes/(total population on the last day of the month for each month in the quarter/3)*1,000.

Escapes by Facility Type, by Month (July 2006 - June 2007)



Escape Rate by Region, by Quarter

(July 2006 - June 2007)



Escapes by Region/Facility

(July 2006 - June 2007)

Region 1

Region/Institution	1st Quarter (Jul-Sep 2006)	2nd Quarter (Oct-Dec 2006)	3rd Quarter (Jan-Mar 2007)	4th Quarter (Apr-Jun 2007)	Fiscal Year 2006/2007
Total Escapes	34	24	28	55	141
Region 1	2	2	0	3	7
Correctional Institutions	0	0	0	0	0
101-Apalachee West CI					
102-Apalachee East CI					
103-Jefferson CI					
104-Jackson CI					
105-Calhon CI					
106-Century CI					
107-Holmes CI					
108-Walton CI					
109-Gulf CI					
110-Washington CI					
111-Gadsden CI (Private)					
112-Bay CF (Private)					
115-Okaloosa CI					
118-Wakulla CI					
119-Santa Rosa CI					
120-Liberty CI					
139-Quincy CI					
150-Gulf CI West Unit					
Work Camps/Road Prisons	0	0	0	0	0
114-River Junction Work Camp					
121-Liberty Work Camp					
134-Tallahassee Road Prison					
136-Caryville Work Camp					
160-Graceville Work Camp					
161-Okaloosa Work Camp					
162-Holmes Work Camp					
165-Calhoun Work Camp					
166-Jackson Work Camp					
167-Century Work Camp					
170-Gulf Forestry Camp					
171-Franklin Work Camp					
172-Walton Work Camp					
177-Berrydale Forestry Camp					
Work Release/Contract Centers	2	2	0	3	7
156-Marianna WRC					
163-Panama City WRC	1	1		1	3
164-Pensacola WRC	1				1
168-Tallahassee WRC		1		2	3
173-Wakulla WRC					
187-Shisa House West					

Escapes by Region/Facility (July 2006 - June 2007)

Region 2

Region/Institution	1st Quarter (Jul-Sep 2006)	2nd Quarter (Oct-Dec 2006)	3rd Quarter (Jan-Mar 2007)	4th Quarter (Apr-Jun 2007)	Fiscal Year 2006/2007
Total Escapes	34	25	28	55	141
Region 2	4	3	2	7	16
Correctional Institutions	0	0	0	0	0
201-Columbia CI					
205-Florida State Prison Main Unit					
206-New River CI West					
208-RMC West Unit					
209-RMC Main Unit					
210-New River CI East					
211-Cross City CI					
212-Mayo CI					
213-Union CI					
214-Putnam CI					
215-Hamilton CI					
216-Madison CI					
218-Taylor CI					
219-Lake City CF (Private)					
224-Taylor Annex					
250-Hamilton CI Annex					
255-Lawtey CI					
277-Gainesville CI					
279-Baker CI					
281-Lancaster CI					
Work Camps/Road Prisons	0	0	0	0	0
204-Florida State Prison Work Camp					
240-Gainesville Work Camp					
261-Baker Work Camp					
262-Cross City Work Camp					
263-Hamilton Work Camp					
264-Columbia Work Camp					
265-Mayo Work Camp					
280-Lancaster Work Camp					
289-Madison Work Camp					
Work Release/Contract Centers	4	3	2	7	16
243-Dinsmore WRC			1	4	5
249-Lake City WRC	1				1
266-Sante Fe WRC	1	1			2
267-Bridges of Jacksonville	2	1		3	6
278-Shisa House East		1	1		2

Escapes by Region/Facility

(July 2006 - June 2007)

Region 3

Region/Institution	1st Quarter (Jul-Sep 2006)	2nd Quarter (Oct-Dec 2006)	3rd Quarter (Jan-Mar 2007)	4th Quarter (Apr-Jun 2007)	Fiscal Year 2006/2007
Total Escapes	34	24	28	55	141
Region 3	7	4	9	13	33
Correctional Institutions	0	0	0	0	0
282-Tomoka CI					
304-Marion CI					
307-Sumter CI					
308-Sumter BTU Boot Camp					
310-Brevard CI					
312-Lake CI					
314-Lowell CI Women's Unit					
320-Central Florida Reception Center Main					
321-Central Florida Reception Center East					
323-Central Florida Reception Center South					
336-Hernando CI					
366-Lowell CI Boot Camp					
367- Lowell Annex					
503-Avon Park CI					
529-Hillsborough CI					
573-Zephyrhills CI					
580-Polk CI					
Work Camps/Road Prisons	1	0	0	2	3
284-Tomoka Work Camp					
287-Levy Forestry Camp					
363-Brevard Work Camp					
364-Marion Work Camp					
365-Sumter Work Camp	1			2	3
504-Avon Park Work Camp					
552-Largo Work Camp					
562-Polk Work Camp					
Work Release/Contract Centers	6	4	9	11	30
242-Daytona WRC					
285-Reality House					
341-Cocoa WRC					
345-Suncoast WRC		1	1	1	3
351-Bridges of Orlando	1		2	1	4
355-Reentry Center of Ocala WRC	1	1	3	3	8
361-Orlando WRC	1		1	2	4
374-Kissimmee WRC	1	1		1	3
540-Bartow WRC					
554-Pinellas WRC			1		1
572-Tarpon Springs WRC					
583-St. Petersburg WRC	2	1	1	3	7

Escapes by Region/Facility

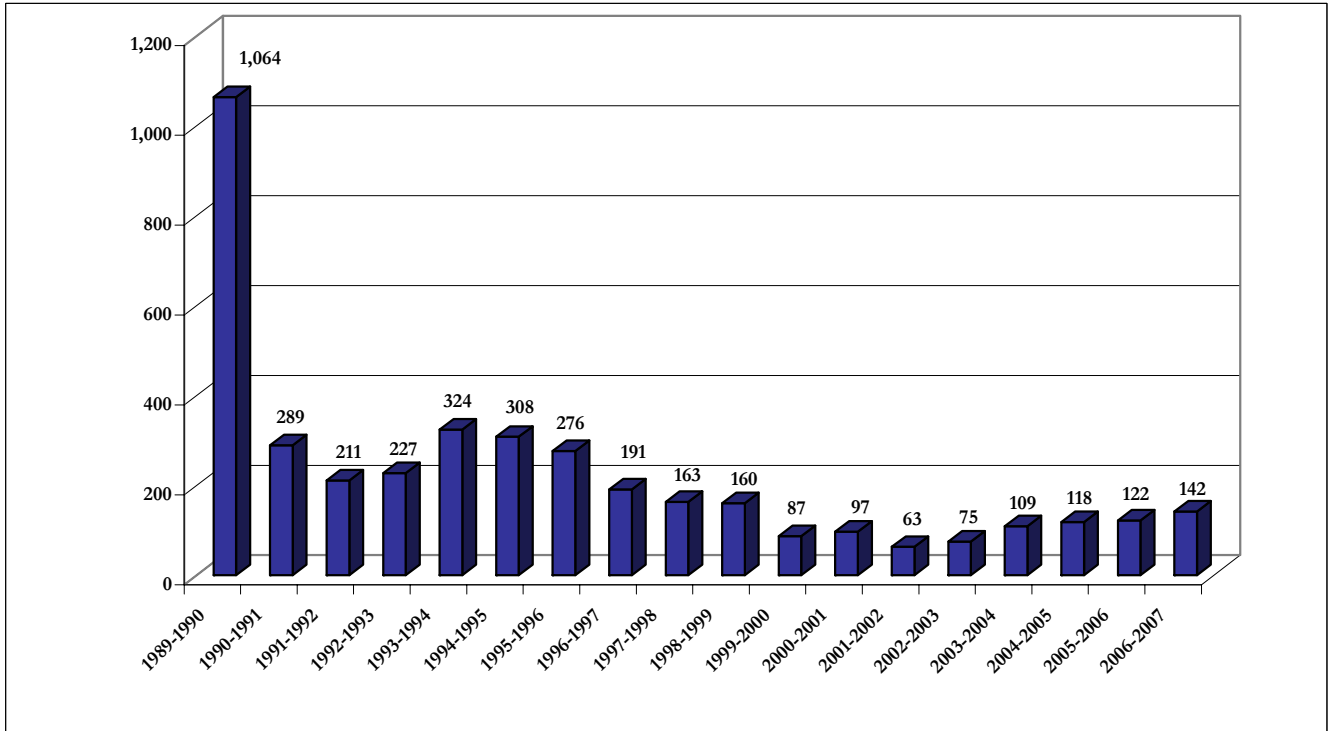
(July 2006 - June 2007)

Region 4

Region/Institution	1st Quarter (Jul-Sep 2006)	2nd Quarter (Oct-Dec 2006)	3rd Quarter (Jan-Mar 2007)	4th Quarter (Apr-Jun 2007)	Fiscal Year 2006/2007
Total Escapes	34	24	28	55	141
Region 4	21	16	17	32	86
Correctional Institutions	1	0	0	0	1
401-Everglades CI					
402-South Florida Reception Center Main	1				1
403- SFRC South Unit					
404-Okeechobee CI					
405-South Bay CF (Private)					
406-Glades CI					
418-Indian River CI					
419-Dade CI					
430-Martin CI					
463-Dade Annex					
475-Broward CI					
501-Hardee CI					
510-Charlotte CI					
511-Moore Haven CF (Private)					
564-DeSoto CI Annex					
576-Hendry CI					
Work Camps/Road Prisons	0	0	0	1	1
420-Martin Work Camp					
426-Big Pine Key Road Prison					
431-Loxahatchee Road Prison					
462-Glades Work Camp					
525-Arcadia Road Prison					
544-Ft. Meyers Work Camp					
560-DeSoto Work Camp					
561-Hendry Work Camp				1	1
563-Hardee Work Camp					
Work Release/Contract Centers	20	16	17	31	84
411-Pompano Transition Center	4	3	3	1	11
412-Bradenton Transition Center				1	1
444-Ft. Pierce WRC	1	1	2	0	4
446-Hollywood WRC					
452-Atlantic WRC					
457-Miami North WRC	3	2	1	1	7
465-Pompano Beach WRC					
467-Bridges of Pompano WRC	8	5	6	20	39
469-West Palm WRC	1		1	3	5
473-Opa Locka WRC	3	5	4	5	17
481- Martin Unit TC					
578-Bradenton WRC					

Total Escapes

(FY 1989-1990 to FY 2006-2007)



Historical Escape Rates (All Facilities)
(FY 1989-1990 to FY 2006-2007)

Fiscal Year	Number of Escapes	Average Inmate Population*	Escapes Per 1,000 Inmates
1989-1990	1,064	40,396	26.34
1990-1991	289	44,483	6.50
1991-1992	211	46,622	4.53
1992-1993	227	48,808	4.65
1993-1994	324	53,594	6.05
1994-1995	308	59,022	5.22
1995-1996	276	63,163	4.37
1996-1997	191	64,242	2.97
1997-1998	163	65,234	2.50
1998-1999	160	67,227	2.38
1999-2000	87	69,782	1.25
2000-2001	97	71,476	1.36
2001-2002	63	72,485	0.87
2002-2003	75	75,162	1.00
2003-2004	109	79,616	1.37
2004-2005	118	83,140	1.42
2005-2006	122	86,570	1.41
2006-2007	142	90,554	1.57

*Inmate populaton average based on four quarters population on last day of each month/4.

Escape Rates for Correctional Institutions
(FY 1993-1994 to FY 2006-2007)

Fiscal Year	Number of Escapes	Average Inmate Population*	Escapes Per 1,000 Inmates
1993-1994	56	42,355	1.30
1994-1995	37	47,266	0.78
1995-1996	13	50,006	0.26
1996-1997	9	53,670	0.19
1997-1998	8	54,573	0.15
1998-1999	4	56,135	0.07
1999-2000	9	58,607	0.15
2000-2001	4	60,268	0.07
2001-2002	2	60,813	0.03
2002-2003	1	62,957	0.02
2003-2004	3	67,018	0.04
2004-2005	8	70,546	0.11
2005-2006	1	73,240	0.01
2006-2007	1	76,600	0.01

*Inmate populaton average based on four quarters population on last day of each month/4.

The Florida Department of Corrections
Bureau of Research and Data Analysis
Direct questions to David Ensley or Todd Gregory
or email us at: dcresearch@mail.dc.state.fl.us
(850) 488-1801 SC 278-1801
2601 Blair Stone Road
Tallahassee, Florida 32399-2500