



Walter A. McNeil  
Secretary

# FLORIDA DEPARTMENT OF CORRECTIONS

## INMATE ESCAPES

**Fiscal Year 2008-2009**



- Fiscal Year 2008-2009
  - Attempts
  - Escapes
  - Recaptures
- Short-term trends in Inmate Escapes
- Long-term trends in Inmate Escapes for Fiscal Years 1989-90 to 2008-09

Prepared by:  
**Florida Department of Corrections**  
Bureau of Research and Data Analysis  
Inmate Information and Analysis Section  
August 2009

# Inmate Escape Report

## (Fiscal Year 2008-09)

This report provides information for the Fiscal Year 2008-09 (July 2008 - June 2009) in reference to attempted escapes, escapes and recaptures from Florida's correctional facilities. This report summarizes the following:

- \* Attempted escapes
- \* Escapes by level, facility type, and facility type by region
- \* Recaptures and recaptures within quarter, by time to recapture, and time to recapture by facility type
- \* Escape rates and rates by region, and facility type by region
- \* Escapes by facility type, by month
- \* Escape rates by region, by quarter

For purposes of this report attempted escape and escape are defined as follows:

Attempted escape: Inmate is apprehended before completion of the escape act.

Escape: Unauthorized absence from the designated facility boundary or absence from any official assignment outside this boundary.

An escape is further defined as one of the following levels:

Level I: Escape from non-secure environment, such as a community correctional center or an outside work squad, in which no Level III behaviors are exhibited.

Level II: Escape from a secure perimeter in which no Level III behaviors are exhibited.

Level III: Escape that involves hostages, weapons/tools, outside assistance, or violence during or after the escape.

An escape rate is defined as the number of escapes/(total population on the last day of the month for each month in the quarter/3)\* 1,000.

A perimeter escape is defined as one initiated from inside the perimeter of a correctional facility other than a community release facility.

## Summary:

The number of escapes increased from 128 in FY 2007-08 to 158 in FY 2008-09. Of the 158 escapes one escape (0.6%) was from a major C.I. while on work detail outside the perimeter. 6 escapes (3.8%) were from a work camp/road prison while on work detail outside the perimeter. 151 of 158 escapes (95.6%) were from work release/contract centers. All 158 escapes were Level I escapes (100.0%) with no Level II or Level III escapes. There were no escapes in FY 2008-09 that constituted a breach of a secure perimeter.

Of the 158 completed escapes, 150 (94.9%) were recaptured to date of this report. 136 of the 150 recaptured, (90.7%) were recaptured within the same quarter as the escape. 92 (67.6%) of the 136 were recaptured within 24 hours of the escape.

The overall escape rate increased from 1.35 in FY 2007-08 to 1.61 in FY 2008-09. The escape rate for correctional institutions was 0.01 and the escape rate for work camps/road prison was 0.53. Region I had the lowest overall rate per 1,000 inmates for the fiscal year at 0.46 whereas Region III had the highest at 3.06.

There were 14 attempted and foiled escapes from Florida correctional facilities during Fiscal Year 2008-09.

## Escapes (July 2008 - June 2009)

Escapes*	1st Quarter (Jul-Sep 2008)		2nd Quarter (Oct-Dec 2008)		3rd Quarter (Jan-Mar 2009)		4th Quarter (Apr-Jun 2009)		Fiscal Year 2008/2009	
Escapes	39		37		31		51		158	
Perimeter Escapes	0		0		0		0		0	
<b>Level</b>										
Level I	39	100.0%	37	100.0%	31	100.0%	51	100.0%	158	100.0%
Level II	0	0.0%	0	0.0%	0	0.0%	0	0.0%	0	0.0%
Level III	0	0.0%	0	0.0%	0	0.0%	0	0.0%	0	0.0%
Not Rated	0	0.0%	0	0.0%	0	0.0%	0	0.0%	0	0.0%
<b>Facility Type</b>										
Correctional Institutions	0	0.0%	0	0.0%	1	3.2%	0	0.0%	1	0.6%
Work Camps/Road Prisons	2	5.1%	3	8.1%	0	0.0%	1	2.0%	6	3.8%
Work Release/Contract Centers	37	94.9%	34	91.9%	30	96.8%	50	98.0%	151	95.6%
<b>Facility Type by Region</b>										
<b>Correctional Institutions</b>	<b>0</b>	<b>0.0%</b>	<b>0</b>	<b>0.0%</b>	<b>1</b>	<b>3.2%</b>	<b>0</b>	<b>0.0%</b>	<b>1</b>	<b>0.6%</b>
Region I	0	0.0%	0	0.0%	0	0.0%	0	0.0%	0	0.0%
Region II	0	0.0%	0	0.0%	0	0.0%	0	0.0%	0	0.0%
Region III	0	0.0%	0	0.0%	1	100.0%	0	0.0%	1	100.0%
Region IV	0	0.0%	0	0.0%	0	0.0%	0	0.0%	0	0.0%
<b>Work Camps/Road Prisons</b>	<b>2</b>	<b>5.1%</b>	<b>3</b>	<b>8.1%</b>	<b>0</b>	<b>0.0%</b>	<b>1</b>	<b>2.0%</b>	<b>6</b>	<b>3.8%</b>
Region I	0	0.0%	1	33.3%	0	0.0%	0	0.0%	1	16.7%
Region II	1	50.0%	2	66.7%	0	0.0%	0	0.0%	3	50.0%
Region III	0	0.0%	0	0.0%	0	0.0%	0	0.0%	0	0.0%
Region IV	1	50.0%	0	0.0%	0	0.0%	1	100.0%	2	33.3%
<b>Work Release/Contract Centers</b>	<b>37</b>	<b>94.9%</b>	<b>34</b>	<b>91.9%</b>	<b>30</b>	<b>96.8%</b>	<b>50</b>	<b>98.0%</b>	<b>151</b>	<b>95.6%</b>
Region I	4	10.8%	2	5.9%	4	13.3%	3	6.0%	13	8.6%
Region II	5	13.5%	12	35.3%	3	10.0%	8	16.0%	28	18.5%
Region III	13	35.1%	6	17.6%	15	50.0%	23	46.0%	57	37.7%
Region IV	15	40.5%	14	41.2%	8	26.7%	16	32.0%	53	35.1%

\*Numbers may differ from previous reports as facilities may change types across time and the number and level of escape may be updated upon receipt of further information.

## Recaptures (July 2008- June 2009)

Recaptures**	1st Quarter (Jul-Sep 2008)		2nd Quarter (Oct-Dec 2008)		3rd Quarter (Jan-Mar 2009)		4th Quarter (Apr-Jun 2009)		Fiscal Year 2008/2009	
<b>Escapes</b>	<b>39</b>		<b>37</b>		<b>31</b>		<b>51</b>		<b>158</b>	
Recaptured	38	97.4%	36	97.3%	29	93.5%	47	92.2%	150	94.9%
Not Recaptured	1	2.6%	1	2.7%	2	6.5%	4	7.8%	8	5.1%
<b>Recaptured Within Quarter</b>	<b>32</b>	<b>84.2%</b>	<b>32</b>	<b>88.9%</b>	<b>26</b>	<b>89.7%</b>	<b>46</b>	<b>97.9%</b>	<b>136</b>	<b>90.7%</b>
<b>Time to Recapture Within Quarter</b>										
Less Than or Equal To 24 Hours	21	65.6%	24	75.0%	17	65.4%	30	65.2%	92	67.6%
Greater Than 24 Hours Within Quarter	11	34.4%	8	25.0%	9	34.6%	16	34.8%	44	32.4%
<b>Recaptures by Facility Type Within Quarter</b>										
<b>Correctional Institutions</b>	<b>0</b>	<b>0.0%</b>	<b>0</b>	<b>0.0%</b>	<b>0</b>	<b>0.0%</b>	<b>0</b>	<b>0.0%</b>	<b>0</b>	<b>0.0%</b>
Less Than or Equal To 24 Hours	0	0.0%	0	0.0%	0	0.0%	0	0.0%	0	0.0%
Greater Than 24 Hours	0	0.0%	0	0.0%	0	0.0%	0	0.0%	0	0.0%
<b>Work Camps/Road Prisons</b>	<b>2</b>	<b>6.3%</b>	<b>3</b>	<b>9.4%</b>	<b>0</b>	<b>0.0%</b>	<b>1</b>	<b>2.2%</b>	<b>6</b>	<b>4.4%</b>
Less Than or Equal To 24 Hours	0	0.0%	3	100.0%	0	0.0%	0	0.0%	3	50.0%
Greater Than 24 Hours	2	100.0%	0	0.0%	0	0.0%	1	100.0%	3	50.0%
<b>Work Release/Contract Centers</b>	<b>30</b>	<b>93.8%</b>	<b>29</b>	<b>90.6%</b>	<b>26</b>	<b>100.0%</b>	<b>45</b>	<b>97.8%</b>	<b>130</b>	<b>95.6%</b>
Less Than or Equal To 24 Hours	21	70.0%	21	72.4%	17	65.4%	30	66.7%	89	68.5%
Greater Than 24 Hours	9	30.0%	8	27.6%	9	34.6%	15	33.3%	41	31.5%

\*\*The Recaptured/Not Recaptured categories may change over time as past escapes are recaptured.

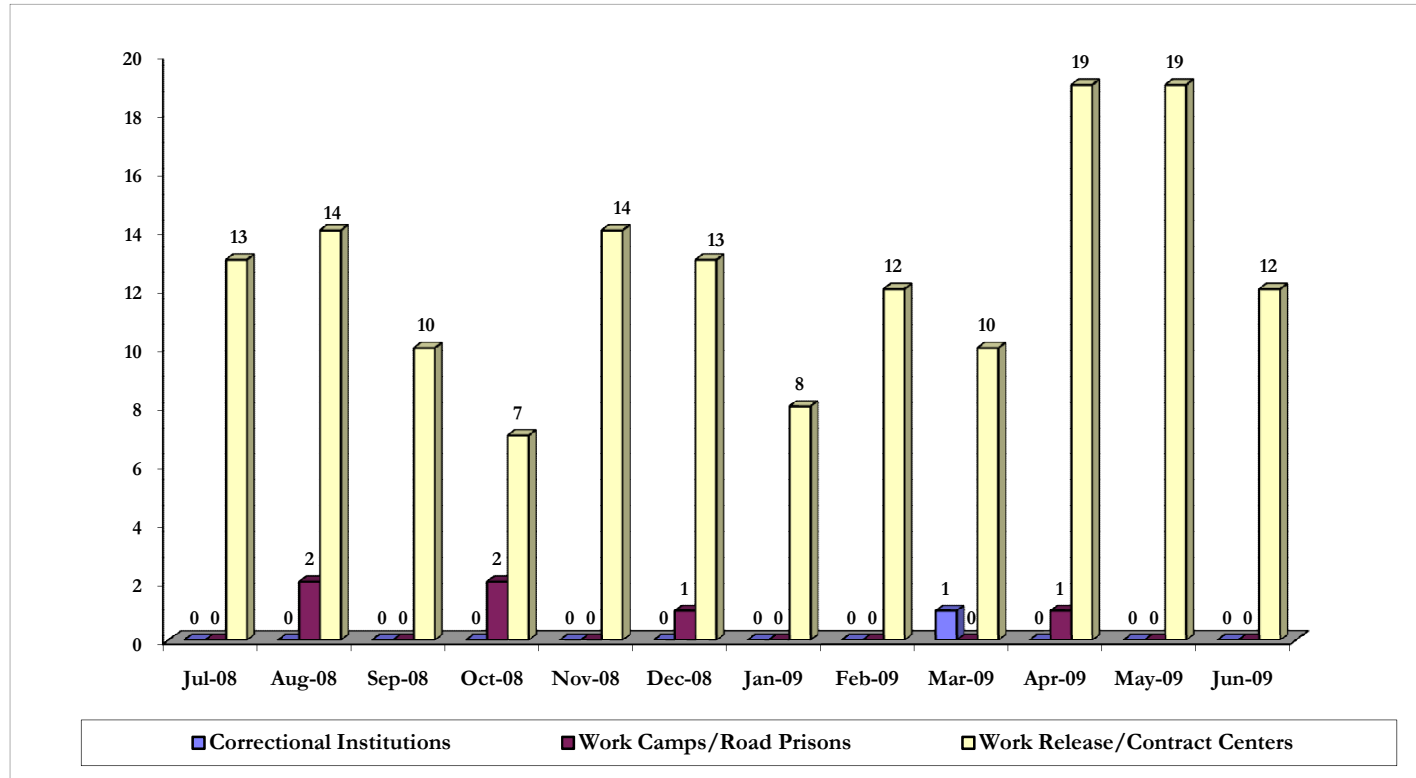
Breakdown of recaptured information is based on those escapes recaptured within the quarter in which the escape occurred.

## Escape Rates (July 2008 - June 2009)

Escape Rate* by Region	1st Quarter (Jul-Sep 2008)	2nd Quarter (Oct-Dec 2008)	3rd Quarter (Jan-Mar 2009)	4th Quarter (Apr-Jun 2009)	Fiscal Year 2008/2009
Escapes	39	37	31	51	158
Escape Rate	0.40	0.38	0.31	0.51	1.61
<b>Region</b>					
Region I	0.14	0.10	0.13	0.10	0.46
Region II	0.22	0.51	0.11	0.29	1.14
Region III	0.70	0.32	0.83	1.21	3.06
Region IV	0.74	0.65	0.37	0.78	2.54
<b>Facility Type by Region</b>					
<b>Correctional Institutions</b>	<b>0.00</b>	<b>0.00</b>	<b>0.01</b>	<b>0.00</b>	<b>0.01</b>
Region I	0.00	0.00	0.00	0.00	0.00
Region II	0.00	0.00	0.00	0.00	0.00
Region III	0.00	0.00	0.07	0.00	0.07
Region IV	0.00	0.00	0.00	0.00	0.00
<b>Work Camps/Road Prisons</b>	<b>0.18</b>	<b>0.27</b>	<b>0.00</b>	<b>0.09</b>	<b>0.53</b>
Region I	0.00	0.25	0.00	0.00	0.26
Region II	0.28	0.56	0.00	0.00	0.83
Region III	0.00	0.00	0.00	0.00	0.00
Region IV	0.67	0.00	0.00	0.59	1.29
<b>Work Release/Contract Centers</b>	<b>10.81</b>	<b>9.90</b>	<b>8.17</b>	<b>13.54</b>	<b>42.48</b>
Region I	13.61	6.71	13.61	10.27	44.14
Region II	9.38	22.30	5.52	14.73	51.92
Region III	9.56	4.31	9.42	14.27	38.29
Region IV	12.13	11.61	6.45	12.84	43.00

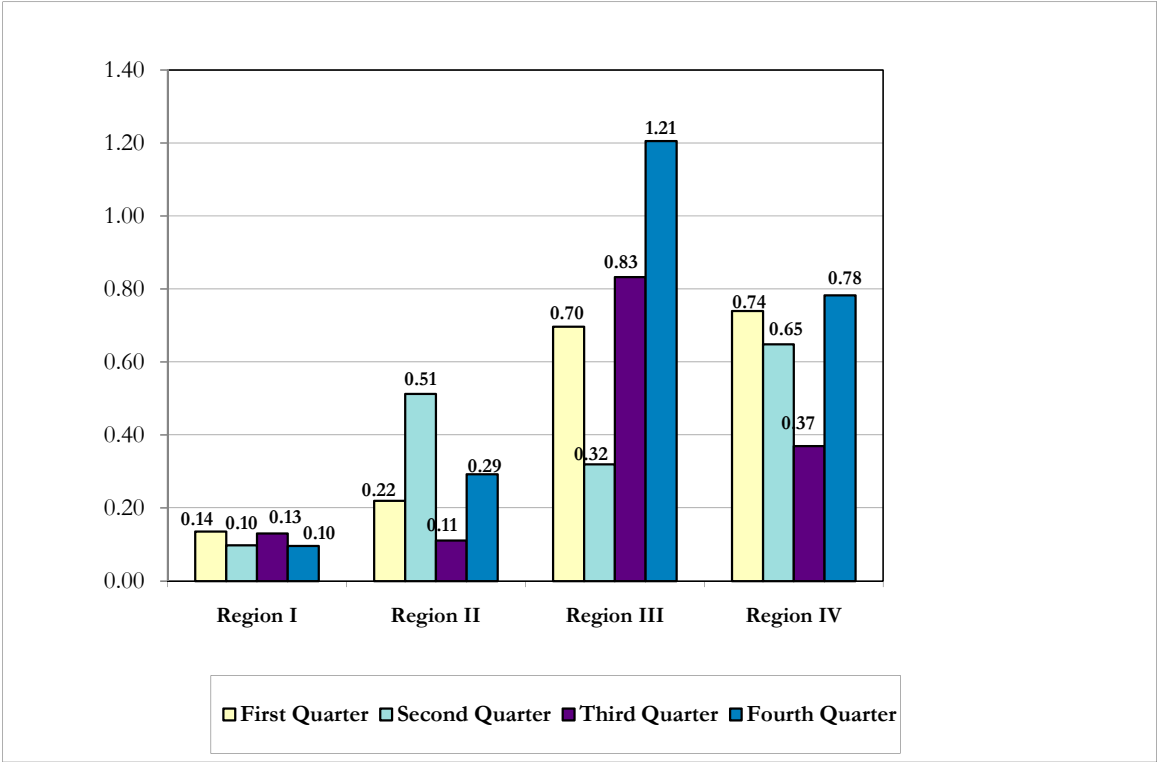
\*Escape rate is defined as the number of escapes/(total population on the last day of the month for each month in the quarter/3)\*1,000.

## Escapes by Facility Type, by Month (July 2008 - June 2009)



# Escape Rate by Region, by Quarter

(July 2008 - June 2009)





# Escapes by Region/Facility

## (July 2008 - June 2009)

### *Region I*

Region/Institution	1st Quarter (Jul-Sep 2008)	2nd Quarter (Oct-Dec 2008)	3rd Quarter (Jan-Mar 2009)	4th Quarter (Apr-Jun 2009)	Fiscal Year 2008/2009
<b>Total Escapes</b>	39	37	31	51	158
<b>Region 1</b>	4	3	4	3	14
<b>Correctional Institutions</b>	0	0	0	0	0
101-Apalachee West CI					
102-Apalachee East CI					
103-Jefferson CI					
104-Jackson CI					
105-Calhon CI					
106-Century CI					
107-Holmes CI					
108-Walton CI					
109-Gulf CI					
110-NWFRC Main Unit					
111-Gadsden CI (Private)					
112-Bay CF (Private)					
113-Franklin CI					
115-Okaloosa CI					
118-Wakulla CI					
119-Santa Rosa CI					
120-Liberty CI					
125-NWFRC Annex					
135-Santa Rosa Annex					
139-Quincy Annex (Liberty CI)					
150-Gulf CI Annex					
159-Graceville CI (Private)					
<b>Work Camps/Road Prisons</b>	0	1	0	0	1
114-River Junction Work Camp					
121-Liberty Work Camp		1			1
134-Tallahassee Road Prison					
136-Caryville Work Camp					
160-Graceville Work Camp					
161-Okaloosa Work Camp					
162-Holmes Work Camp					
165-Calhoun Work Camp					
166-Jackson Work Camp					
167-Century Work Camp					
170-Gulf Forestry Camp					
171-Bay City Work Camp					
172-Walton Work Camp					
173-Wakulla Work Camp					
177-Berrydale Forestry Camp					
<b>Work Release/Contract Centers</b>	4	2	4	3	13
163-Panama City WRC				2	2
164-Pensacola WRC	1		1		2
168-Tallahassee WRC	3	2	3	1	9
187-Shisa House West (Private)					

# Escapes by Region/Facility

(July 2008 - June 2009)

## *Region II*

Region/Institution	1st Quarter (Jul-Sep 2008)	2nd Quarter (Oct-Dec 2008)	3rd Quarter (Jan-Mar 2009)	4th Quarter (Apr-Jun 2009)	Fiscal Year 2008/2009
<b>Total Escapes</b>	39	37	31	51	158
<b>Region 2</b>	6	14	3	8	31
<b>Correctional Institutions</b>	0	0	0	0	0
201-Columbia CI					
205-Florida State Prison Main Unit					
206-FSP West Unit					
208-RMC West Unit					
209-RMC Main Unit					
210-New River CI					
211-Cross City CI					
212-Mayo CI					
213-Union CI					
214-Putnam CI					
215-Hamilton CI					
216-Madison CI					
218-Taylor CI					
219-Lake City CF (Private)					
224-Taylor Annex					
250-Hamilton CI Annex					
251-Columbia Annex					
255-Lawtey CI					
277-Gainesville CI					
279-Baker CI					
281-Lancaster CI					
<b>Work Camps/Road Prisons</b>	1	2	0	0	3
204-New River "O" Unit					
221-RMC Work Camp					
227-Taylor Work Camp					
232-Suwannee Work Camp					
240-Gainesville Work Camp					
261-Baker Work Camp					
262-Cross City Work Camp					
263-Hamilton Work Camp					
264-Columbia Work Camp	1				1
265-Mayo Work Camp					
280-Lancaster Work Camp		2			2
289-Madison Work Camp					
<b>Work Release/Contract Centers</b>	5	12	3	8	28
243-Dinsmore WRC	3	9	2	2	16
249-Lake City WRC	1			1	2
266-Santa Fe WRC	1	2	1	2	6
267-Bridges of Jacksonville (Private)		1		3	4
278-Shisa House East (Private)					

# Escapes by Region/Facility

## (July 2008 - June 2009)

### *Region III*

Region/Institution	1st Quarter (Jul-Sep 2008)	2nd Quarter (Oct-Dec 2008)	3rd Quarter (Jan-Mar 2009)	4th Quarter (Apr-Jun 2009)	Fiscal Year 2008/2009
<b>Total Escapes</b>	39	37	31	51	158
<b>Region 3</b>	13	6	16	23	58
<b>Correctional Institutions</b>	0	0	1	0	1
282-Tomoka CI					
304-Marion CI					
307-Sumter CI					
308-Sumter BTU Boot Camp					
310-Brevard CI					
312-Lake CI			1		1
314-Lowell CI Women's Unit					
320-Central Florida Reception Center Main					
321-Central Florida Reception Center East					
323-Central Florida Reception Center South					
336-Hernando CI					
366-Lowell CI Boot Camp					
367- Lowell Annex					
503-Avon Park CI					
529-Hillsborough CI					
573-Zephyrhills CI					
575-Demilly CI					
580-Polk CI					
<b>Work Camps/Road Prisons</b>	0	0	0	0	0
284-Tomoka Work Camp					
287-Levy Forestry Camp					
316-Lowell Work Camp					
363-Brevard Work Camp					
364-Marion Work Camp					
365-Sumter Work Camp					
504-Avon Park Work Camp					
552-Largo Road Prison					
562-Polk Work Camp					
<b>Work Release/Contract Centers</b>	13	6	15	23	57
242-Daytona WRC	1	1	1		3
285-Reality House (Private)					
341-Cocoa WRC				1	1
345-Suncoast WRC Female (Private)	1		1	3	5
346-Suncoast WRC Male (Private)			2	1	3
351-Bridges of Orlando (Private)	3	2	3	1	9
352-Orlando Transition Center (Private)	1	1			2
353-Transition House Inc. Kissimmee (Private)	1	1		1	3
354-Largo Residential Re-Entry Center (Private)			5	10	15
355-Re-Entry Center of Ocala (Private)	3				3
361-Orlando WRC	1				1
374-Kissimmee WRC	2	1	2		5
540-Bartow WRC					
554-Pinellas WRC				1	1
572-Tarpon Springs WRC				2	2
583-St. Petersburg WRC			1	3	4

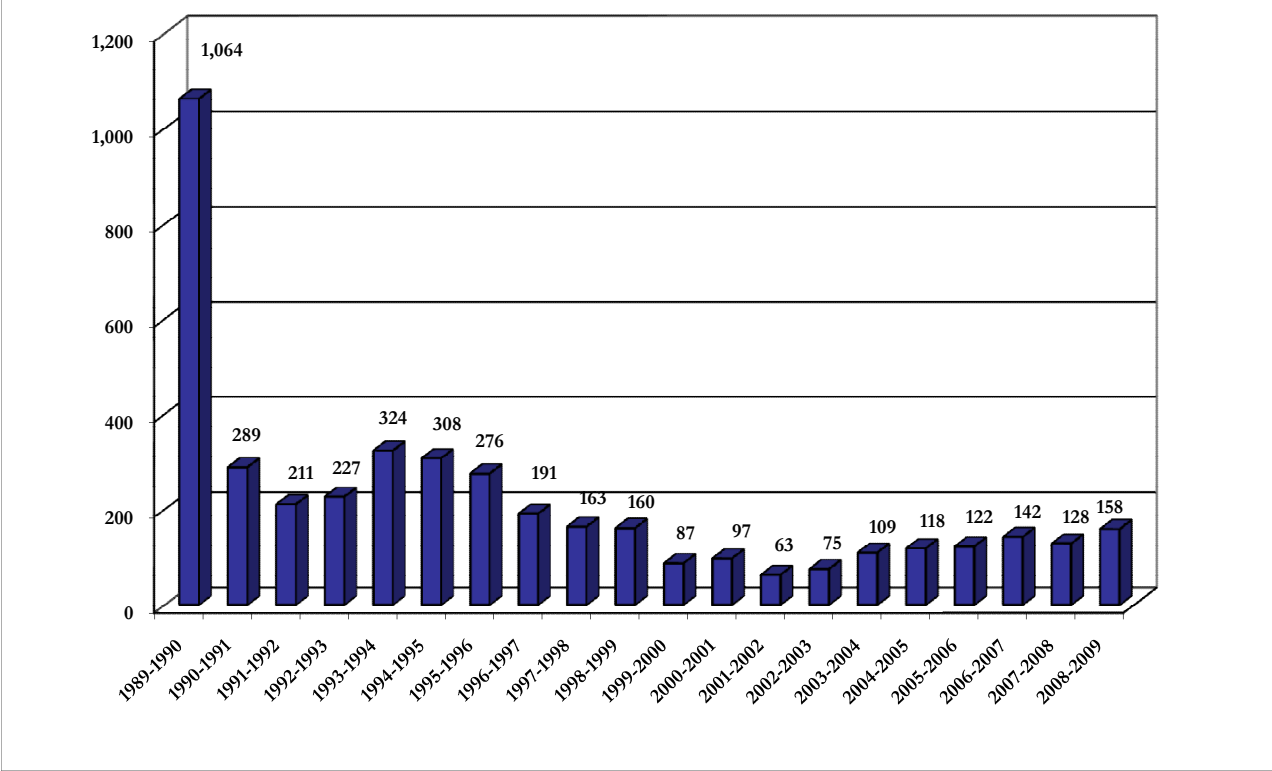
# Escapes by Region/Facility

(July 2008 - June 2009)

## Region IV

Region/Institution	1st Quarter (Jul-Sep 2008)	2nd Quarter (Oct-Dec 2008)	3rd Quarter (Jan-Mar 2009)	4th Quarter (Apr-Jun 2009)	Fiscal Year 2008/2009
<b>Total Escapes</b>	39	37	31	51	158
<b>Region 4</b>	16	14	8	17	55
<b>Correctional Institutions</b>	0	0	0	0	0
401-Everglades CI					
402-South Florida Reception Center Main					
403- SFRC South Unit					
404-Okeechobee CI					
405-South Bay CF (Private)					
406-Glades CI					
418-Indian River CI					
419-Homestead CI					
430-Martin CI					
463-Dade CI					
475-Broward CI					
501-Hardee CI					
510-Charlotte CI					
511-Moore Haven CF (Private)					
564-DeSoto CI Annex					
576-Hendry CI					
<b>Work Camps/Road Prisons</b>	1	0	0	1	2
420-Martin Work Camp					
426-Big Pine Key Road Prison				1	1
431-Loxahatchee Road Prison					
462-Glades Work Camp					
464-Sago Palm Work Camp					
525-Arcadia Road Prison	1				1
544-Ft. Myers Work Camp					
560-DeSoto Work Camp					
561-Hendry Work Camp					
563-Hardee Work Camp					
<b>Work Release/Contract Centers</b>	15	14	8	16	53
411-Pompano Transition Center (Private)	1			1	2
412-Bradenton Transition Center (Private)			1		1
444-Ft. Pierce WRC		1			1
446-Hollywood WRC					
452-Atlantic WRC					
457-Miami North WRC	1	3	2	2	8
467-Bridges of Pompano WRC (Private)	12	8	4	10	34
469-West Palm WRC	1	2		1	4
473-Opa Locka WRC			1	2	3

# Total Escapes (FY 1989-1990 to FY 2008-2009)



**Historical Escape Rates (All Facilities)**  
(FY 1989-1990 to FY 2008-2009)

<b>Fiscal Year</b>	<b>Number of Escapes</b>	<b>Average Inmate Population*</b>	<b>Escapes Per 1,000 Inmates</b>
1989-1990	1,064	40,396	26.34
1990-1991	289	44,483	6.50
1991-1992	211	46,622	4.53
1992-1993	227	48,808	4.65
1993-1994	324	53,594	6.05
1994-1995	308	59,022	5.22
1995-1996	276	63,163	4.37
1996-1997	191	64,242	2.97
1997-1998	163	65,234	2.50
1998-1999	160	67,227	2.38
1999-2000	87	69,782	1.25
2000-2001	97	71,476	1.36
2001-2002	63	72,485	0.87
2002-2003	75	75,162	1.00
2003-2004	109	79,616	1.37
2004-2005	118	83,140	1.42
2005-2006	122	86,570	1.41
2006-2007	142	90,554	1.57
2007-2008	128	94,528	1.35
2008-2009	158	98,306	1.61

\*Inmate populaton average based on four quarters population on last day of each month/4.

**Escape Rates for Correctional Institutions**  
(FY 1993-1994 to FY 2008-2009)

<b>Fiscal Year</b>	<b>Number of Escapes</b>	<b>Average Inmate Population*</b>	<b>Escapes Per 1,000 Inmates</b>
1993-1994	56	42,355	1.30
1994-1995	37	47,266	0.78
1995-1996	13	50,006	0.26
1996-1997	9	53,670	0.19
1997-1998	8	54,573	0.15
1998-1999	4	56,135	0.07
1999-2000	9	58,607	0.15
2000-2001	4	60,268	0.07
2001-2002	2	60,813	0.03
2002-2003	1	62,957	0.02
2003-2004	3	67,018	0.04
2004-2005	8	70,546	0.11
2005-2006	1	73,240	0.01
2006-2007	1	76,600	0.01
2007-2008	0	80,477	0.00
2008-2009	1	83,483	0.01

\*Inmate populaton average based on four quarters population on last day of each month/4.

The Florida Department of Corrections  
Bureau of Research and Data Analysis  
Direct questions to David Ensley or Todd Gregory  
or email us at: [dcresearch@mail.dc.state.fl.us](mailto:dcresearch@mail.dc.state.fl.us)  
(850) 488-1801  
2601 Blair Stone Road  
Tallahassee, Florida 32399-2500