



Kenneth S. Tucker
Secretary

TRENDS IN FLORIDA PRISON ADMISSIONS AND POPULATIONS



March 2012



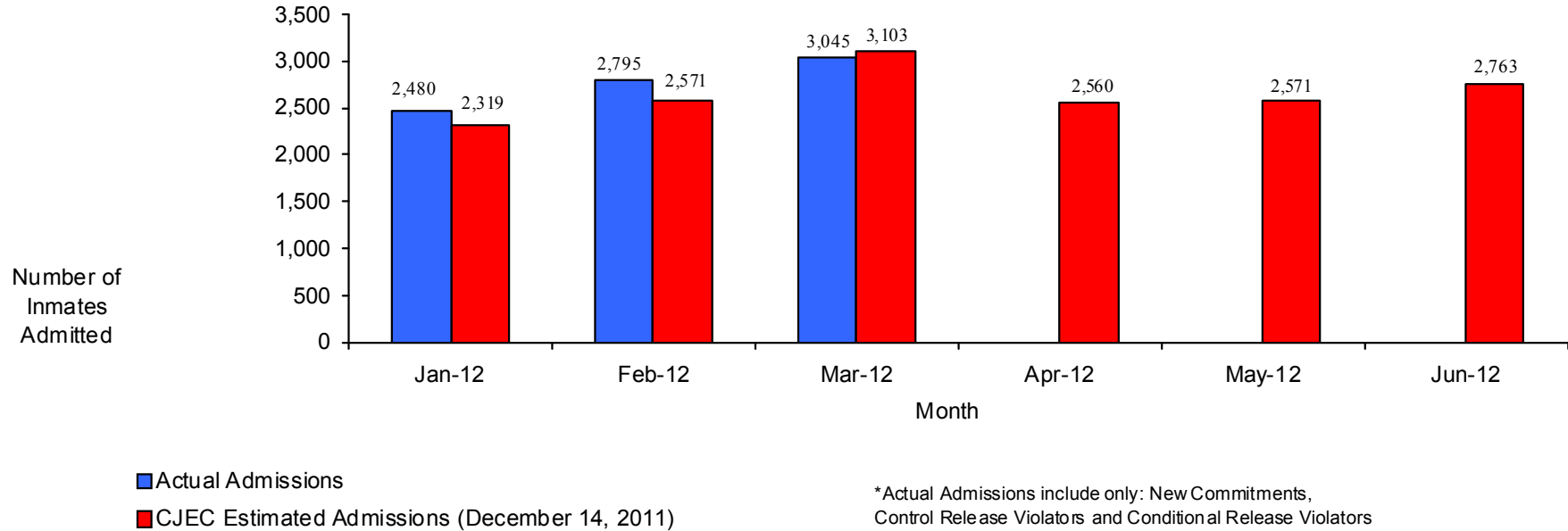
Prepared by:
Florida Department of Corrections
Bureau of Research and Data Analysis
Inmate Information and Analysis Section
April 2012

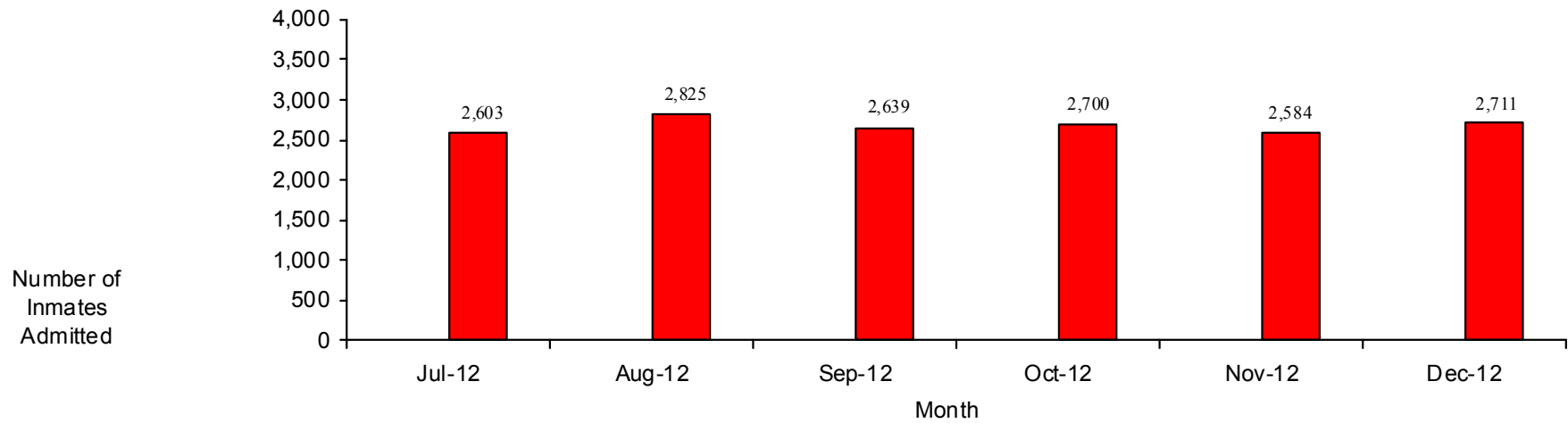
- Actual Admissions Compared With CJEC Projected Admissions
- Actual Prison Population Compared With CJEC Projected Population
- Types of Admissions (New, Violators, etc.)
- Offender Types Admitted With Special Sentencing Provision

Introduction

The purpose of this report is to compare the estimated prison admission and population numbers from the Criminal Justice Estimating Conference (CJEC) to the actual prison admission and population numbers. Types of admissions and offenders admitted under special sentencing provisions are also described. The CJEC estimations are from the December 14, 2011 conference.

CJEC Estimated Prison Admissions Versus Actual Admissions*





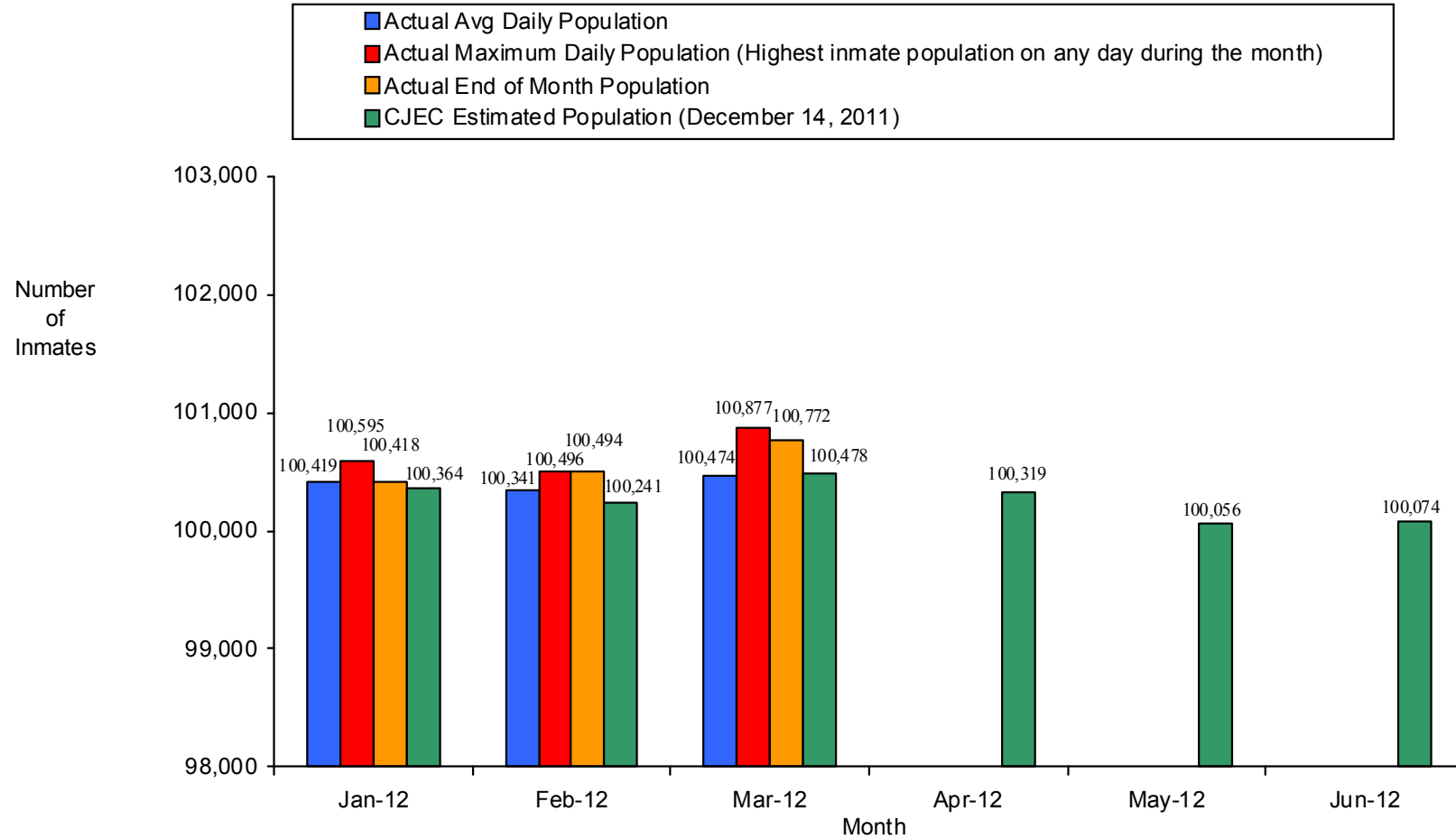
■ Actual Admissions
■ CJEC Estimated Admissions (December 14, 2011)

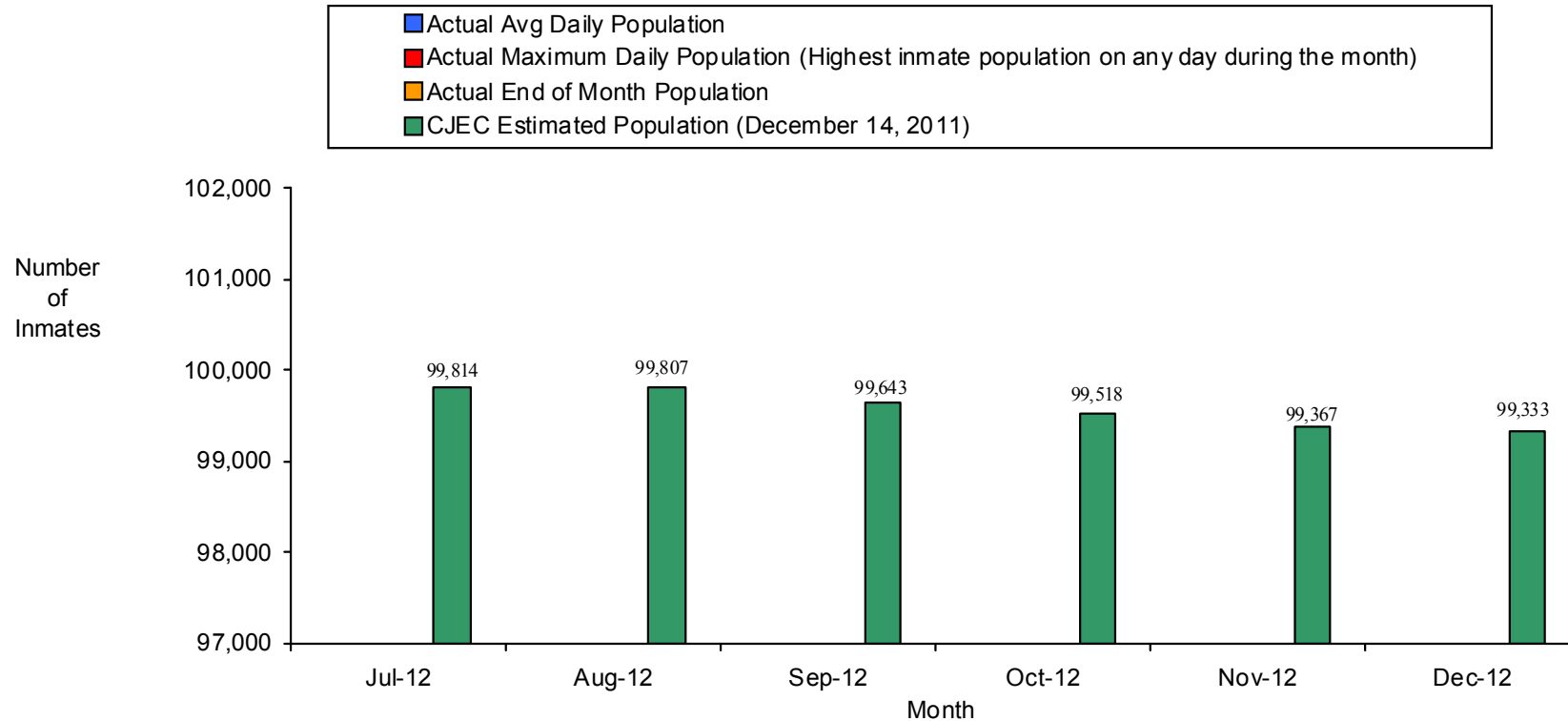
*Actual Admissions include only: New Commitments, Control Release Violators and Conditional Release Violators

The Criminal Justice Estimating Conference (CJEC) admissions estimate for March 2012 overestimated the actual number of inmates admitted by 58 inmates. The percent difference between the CJEC estimated admissions and actual admissions was 1.90%.

- ◆ Total Actual Admissions since January 2012 – 8,320
- ◆ Total Estimated Admissions since January 2012 – 7,993
- ◆ Cumulative Admissions Difference – 327 (3.93%)

CJEC Estimated Prison Population Versus Actual Prison Population





Using the average daily population, the modified CJEC population estimate for March 2012 overestimated the actual number of inmates in the population by 4 inmates. The percent difference between the CJEC estimated population and the actual average daily population was 0.00%.

Using the maximum daily population, the modified CJEC population estimate for March 2012 underestimated the actual number of inmates in the population by 399 inmates. The percent difference between the CJEC estimated population and the actual maximum daily population was 0.40%.

Using the end of month population, the modified CJEC population estimate for March 2012 underestimated the actual number of inmates in the population by 294 inmates. The percent difference between the CJEC estimated population and the actual end of month population was 0.29%.

Details on Admission Numbers

Type of Admission	Jan 12	Feb 12	Mar 12	Apr 12	May 12	Jun 12
New Commitments	2,367	2,673	2,931			
Violators of Control Release with New Sentences	0	0	0			
Violators of Conditional Release with New Sentences	9	12	11			
Violators of Control Release without New Sentences	0	1	0			
Violators of Conditional Release without New Sentences	104	109	103			
Total	2,480	2,795	3,045	0	0	0

Type of Admission	Jul 12	Aug 12	Sept 12	Oct 12	Nov 12	Dec 12	Total
New Commitments							7,971
Violators of Control Release with New Sentences							0
Violators of Conditional Release with New Sentences							32
Violators of Control Release without New Sentences							1
Violators of Conditional Release without New Sentences							316
Total	0	0	0	0	0	0	8,320

Offenders Admitted with Special Sentencing Provisions

Type of Special Sentencing Provision^{1,2}	Jan 12	Feb 12	Mar 12	Apr 12	May 12	Jun 12
Habitual Offenders	125	145	163			
Violent Habitual Offenders	18	16	27			
Releasee Reoffenders	56	67	72			
Violent Career Criminals	3	2	3			
Three Time Violent Felony Offenders	0	0	0			
Dangerous Sex Felony Offender	0	0	2			
Total	202	230	267	0	0	0

Type of Special Sentencing Provision^{1,2}	Jul 12	Aug 12	Sept 12	Oct 12	Nov 12	Dec 12	Total
Habitual Offenders							433
Violent Habitual Offenders							61
Releasee Reoffenders							195
Violent Career Criminals							8
Three Time Violent Felony Offenders							0
Dangerous Sex Felony Offender							2
Total	0	0	0	0	0	0	699

1. Offenders can be admitted with more than one special sentencing provision. Therefore, an offender can be included in more than one group.

2. These are the special provisions at admission for the current commitment and are subject to change upon audit of sentence structure.

- 99.6% of March admissions have every component of their sentence covered by the mandatory 85% minimum sentence served law.

Details on Prison Population

Total End of Month Inmate Population	Total Population	Males	Females	HIV Positive Inmates	Inmates 50 Years of Age and Older	Youthful Offenders*	Sentenced Under 85% Law+
January 2012	100,418	93,427 (93.0%)	6,991 (7.0%)	2,834 (2.8%)	17,917 (17.8%)	2,698 (2.7%)	89,561 (89.2%)
February 2012	100,494	93,492 (93.0%)	7,002 (7.0%)	2,894 (2.9%)	17,996 (17.9%)	2,692 (2.7%)	89,659 (89.2%)
March 2012	100,772	93,797 (93.1%)	6,975 (6.9%)	2,896 (2.9%)	18,142 (18.0%)	2,710 (2.7%)	89,997 (89.3%)
April 2012							
May 2012							
June 2012							
July 2012							
August 2012							
September 2012							
October 2012							
November 2012							
December 2012							

* Section 958.04, F.S., authorizes the court to sentence as a youthful offender any person:

- Who is at least 18 years of age or who has been transferred for prosecution to the criminal division of the circuit court pursuant to chapter 985;
- Who is found guilty of or who has tendered, and the court has accepted, a plea of nolo contendere or guilty to a crime that is, under the laws of this state, a felony if the offender is younger than 21 years of age at the time sentence is imposed;
- Who has not previously been classified as a youthful offender under the provisions of this act; and
- Who has not been found guilty of a capital or life felony.

Section 958.11(4), F.S., authorizes the Department to classify as a youthful offender any person:

- Who is at least 18 years of age or who has been transferred for prosecution to the criminal division of the circuit court pursuant to chapter 985;
- Who has not previously been classified as a youthful offender under the provisions of this act;
- Who has not been found guilty of a capital or life felony;
- Whose age does not exceed 24 years; and
- Whose total length of sentence does not exceed 10 years.

In addition to the above, s. 958.11(6), F.S., authorizes the Department to assign inmates 19 or younger (except capital or life felons) to youthful offender facilities if the Department determines that the inmate's mental or physical vulnerability would substantially or materially jeopardize his or her safety in a non-youthful offender facility.

+ This number represents those inmates which have every component of their sentence covered by the mandatory 85% minimum sentence served law.