

FLORIDA DEPARTMENT OF CORRECTIONS

RECIDIVISM REPORT: INMATES RELEASED FROM FLORIDA PRISONS

Jeb Bush
Governor

Michael W. Moore
Secretary

MAY 2001

Executive Summary

This document reports general and standard recidivism rates and shows how certain offender characteristics and other factors affect these rates. This information provides context for any use of recidivism rates as performance measures for the Department of Corrections.

Cautions Regarding Use

- These rates should not be compared with rates previously published because more offense data is now available than was previously.
- The rates reported provide descriptive information; they are not the results of an evaluation of the Department of Corrections, its activities, or its programs.

Methodology

- **New:** An advanced statistical technique (survival analysis) is used to calculate rates, allowing more recent release data to be included, providing short and long term rates.
- **New:** Advanced statistical techniques are used to establish how much certain factors influence reoffense rates (logistic regression) and to specify the relative contribution of a factor while controlling for other factors' influence (proportional hazards regression).
- **New:** Arrest data supplied by the Florida Department of Law Enforcement are used to calculate additional recidivism rates based on rearrest as opposed to reoffense (i.e., reconviction).
- All available and appropriate offense data maintained by the Department are used to calculate reoffense rates.

- All available prison releases with a minimum 75 percent chance of capturing a subsequent offense are included, regardless of how long or short the current follow-up period after release is.
- Only releases from original prison commitments are used; releases following technical violation returns are not included to avoid inflating “successful” releases.

General Recidivism (Reoffense) Rates *Updated*

The inmate reoffense rate is the percentage of inmates released since July 1993 who return to the Department for a new offense committed within a certain time following their release:

6 mo.	14.1%	18 mo.	29.3%	36 mo.	40.2%	60 mo.	46.8%
12 mo.	23.1%	24 mo.	33.8%	48 mo.	44.3%	72 mo.	48.6%

Standard Recidivism (Reoffense) Rates

The department uses two years from prison release as the standard follow-up period.

- Two years allows enough time for rates to become stable, reliable measurements.
- Longer-term rates are less likely to reflect true effects of incarceration on recidivism.

Latest Rates *Updated*

- A **general standard rate** of 33.8% is calculated from all releases since July 1993.
- The **latest standard rate** of 34.7% is calculated from releases in Fiscal Year 1996-97, the most recent annual release cohort that has a full 24-month follow-up period.

Rates by Year Released

- **Updated:** Recidivism (reoffense or rearrest) rates do not vary much for inmates released during different fiscal years (e.g., 2-year reoffense rate— high: 36.6% for FY95-96 releases, low: 34.1% for FY 97-98 releases).
- No clear upward or downward trend in rates appears for inmates released during each of the last six fiscal years.
- **Rates may have limited value as performance measures** of progress on a year-to-year basis, although in proper context they may serve as useful benchmarks for program evaluation.

Rearrest vs. Reoffense Recidivism Rates *New*

- Recidivism rates as measured by rearrest are higher than rates measured by reoffense (reconviction) (e.g., 2-year rate— rearrest: 60.2% vs. reoffense: 36.2%).
- Rearrest and reoffense recidivism rate curves have the same general characteristics— a relatively rapid increase early after prison with continuing increases at a declining pace as more time passes from release.

Factors Affecting Recidivism (Reoffense) Rates

- Factors analyzed are those that many scientific studies have shown to influence rates.
- Only factors the Department has reliable, readily available data on are included.
- The individual effects of each factor on reoffense rates are described below.

Age Group *Updated*

- Younger offenders reoffend at much higher rates than older offenders (e.g., 2-year rate— under 18: 51.3% vs. age 35-49: 30.0%).
- The youngest offenders reoffend sooner after release than older age groups. For example, it only takes 18 months for 47.0% of those under 18 to reoffend, whereas those age 25-34 reach 46.8% at 48 months.

Prior Recidivism (Reoffense) *Updated*

- Inmates who have reoffended before do so again at higher rates than those who have not (e.g., 2-year rate— two or more priors: 55.6% vs. no priors: 32.3%).

Gender and Race *Updated*

- Black males appear to reoffend at higher rates than white males (e.g., 2-year rate— black males: 39.9% vs. white males: 26.8%).
- White males and females reoffend at similar rates (e.g., 2-year rate— white males: 26.8% vs. white females: 26.5%).
- Some factor other than race may account for much of the difference between black and white male rates (+13.1 percentage points), because the race difference is lower between black and white females (+3.0 percentage points).

Education Level *Updated*

- The tested education level of inmates at release is strongly related to their reoffense rates (e.g., 2-year rate— under grade 4: 39.1% vs. grade 12: 25.8%).
- Education grade level test results are used whether or not an inmate participated in education programs in prison. **This report does not measure the effect of prison education programs on recidivism.**

Offense Type *Updated*

- Property offenders reoffend slightly more than drug offenders. Both groups reoffend much more than offenders imprisoned for violent offenses (e.g., 2-year rate— property offense: 39.4% vs. drug offense: 37.1% vs. violent offense: 25.7%).

Custody Class *Updated*

- Inmates in close custody when released reoffend at higher rates than those released from either medium or minimum custody (e.g., 2-year rate— close custody: 40.7% vs. medium custody: 34.3% vs. minimum custody: 32.2%).

Total Disciplinary Reports *Updated*

- Inmates who received more disciplinary reports are more likely to reoffend than those who received fewer disciplinary reports (e.g., 2-year rate— over 10 reports: 44.7% vs. no reports: 30.4%).

Time Served in Prison *Updated*

- Inmates who serve less than 5 years reoffend at similar rates, but those who serve more than 5 years in prison reoffend at lower rates (e.g., 2-year rate— 5 years or less: range 33.9% - 35.1% vs. more than 5 years: 28.2%).

Combined Effect of Factors on Recidivism (Reoffense) Rates *New*

- Statistical analysis shows these nine factors are significant and have the combined effect of improving our ability to predict which inmates recidivate as follows:

Months Since Release	Correct Predictions Expected by Chance	Correct Predictions by Model	Improvement in Predictions
18	55.9 %	66.5 %	19.0 %
36	50.1 %	61.5 %	22.8 %
60	60.6 %	74.0 %	22.0 %

Relative Effect of Factors on Recidivism (Reoffense) Rates *New*

- Statistical analysis of the nine factors indicates the relative influence of each factor when controlling for all others, as follows:
 - **Age** – reoffense probability drops by 2.1% for each year older at release.
 - **Prior Recidivism** – prior reoffenders are 58.1% more likely to reoffend.
 - **Race** – blacks are 43.6% more likely to reoffend than non-blacks.
 - **Gender** – male inmates are 24.2% more likely to reoffend than females.
 - **Education** – reoffense probability drops by 2.9% for each higher grade of adult basic education tested.
 - **Offense** – primary property offenders are 13.9% more likely to reoffend; primary violent offenders are 31.9% less likely to reoffend.
 - **Custody** – releasees from close custody are 10.8% more likely to reoffend.
 - **Disciplinary Reports** – reoffense probability rises by 1.6% for each additional disciplinary report received.
 - **Time Served** – reoffense probability drops by 1.2% for each additional year served.

DOCUMENTS AVAILABLE

[Full Report](#)

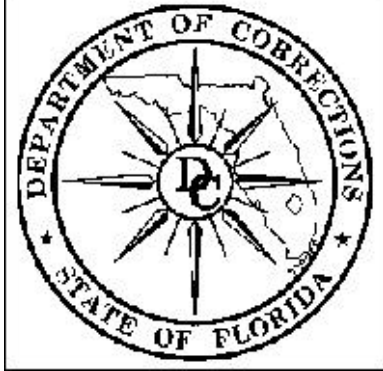
[Executive Summary](#)

[Technical Appendix](#)

Prepared by the Florida Department of Corrections, Bureau of Research and Data Analysis, May 2001

For more information visit our website: www.dc.state.fl.us

Or contact Glen Holley (850) 410-4489 or David Ensley (850) 410-4482



FLORIDA DEPARTMENT OF CORRECTIONS

RECIDIVISM REPORT: INMATES RELEASED FROM FLORIDA PRISONS

MAY 2001

Jeb Bush
Governor

Michael W. Moore
Secretary

PURPOSE

This document reports general and standard recidivism rates and shows how certain offender characteristics and other factors relate to these rates. This information provides context for using recidivism rates to measure performance of the Department of Corrections.

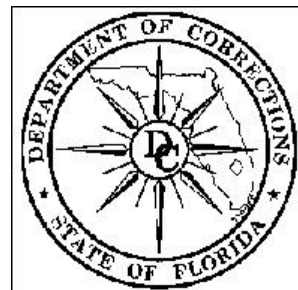
CONTENTS

- Executive Summary
- General Recidivism Rates
- Standard Recidivism Rates
- Recidivism Rate Curves
- Factors Affecting Recidivism Rates
- Recidivism Rates Based on Rearrest
- Technical Appendix

DOCUMENTS AVAILABLE

Executive Summary
Full Report
Technical Appendix

GENERAL RECIDIVISM RATES



Generally, an inmate recidivism rate is the percentage of inmates released during a specific time period who commit a new offense within a certain time following their release.

Recidivism rates are calculated based on a release cohort, a group of inmates released during a specified time period. The release cohort used to measure recidivism rates may vary. For example, a recidivism rate may be calculated for inmates released during a Fiscal Year (July through June) or for all inmates released since a certain date. This report primarily relies on the latter method, calculating recidivism rates for inmates released from Department of Corrections custody since July 1993.

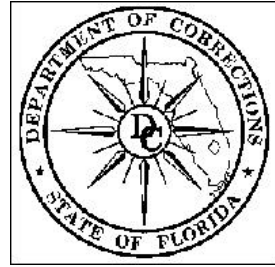
Recidivism rates must be calculated over a specified follow-up period. As more time passes since a group of inmates was released from prison, the number of inmates who recidivate grows, so the percentage of released offenders who commit new offenses increases. For example, the recidivism rate measured at 36 months after release is higher than the rate measured at 12 months after release. Recidivism rates can be compared between follow-up periods for the same release cohort. However, when comparing rates for different release cohorts, one should use rates based on the same follow-up time after release.

This report provides data on general recidivism rates up to 78 months following release. However, not all released inmates used to calculate these rates have been out of prison this long. In order to correct for differences among inmates in the time since release, this report relies on a statistical procedure for estimating rates that accounts for the follow-up period for each inmate released. The method includes all inmates released but only counts them for recidivism rates based on their current individual follow-up periods. For more information on the methodology and statistical procedure used to calculate rates for this report see the [Technical Appendix](#).

The general recidivism rate for inmates released since July 1993 from Florida Department of Corrections facilities is 33.8% at 24 months following release from prison. In other words, about 34 of 100 inmates released from prison during this time were convicted of another offense within two years. Rates in this report can be interpreted as current probabilities of reoffending: there is a 33.8% probability that an inmate released from prison will commit a new offense within two years for which they will be sentenced to either prison or state supervision.

For information about the Department's standard measure of recidivism rates see [Standard Recidivism Rates](#). For information about what influences recidivism rates see [Factors Affecting Recidivism Rates](#).

STANDARD RECIDIVISM RATES



The Florida Department defines the standard recidivism rate as the percentage of inmates who, within two years of release from prison, commit any crime that leads to another term of incarceration or community supervision with this agency.

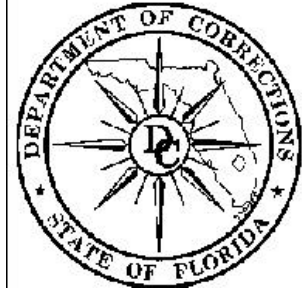
The 24-month follow-up period is based on the date of a new offense, not the date of readmission to prison or supervision. Offenders who return to prison for a technical violation of supervision are not counted as recidivists unless they committed a new offense. Offenders do count as recidivists for a new offense while on supervision even when, as often happens, the conviction for the offense occurs after they return to prison for technical violations. For more information on the methodology used to calculate rates for this report see the Technical Appendix.

The Department uses two years as the standard follow-up period so the rates can best be used to evaluate sentencing policies as well as prison programs and interventions that are intended to reduce recidivism. Two years allows enough time since release for recidivism rates to become stable and reliable measurements. Also, 24-month rates are more likely than those from a longer follow-up period to indicate any effect on recidivism from incarceration as opposed to post-release factors.

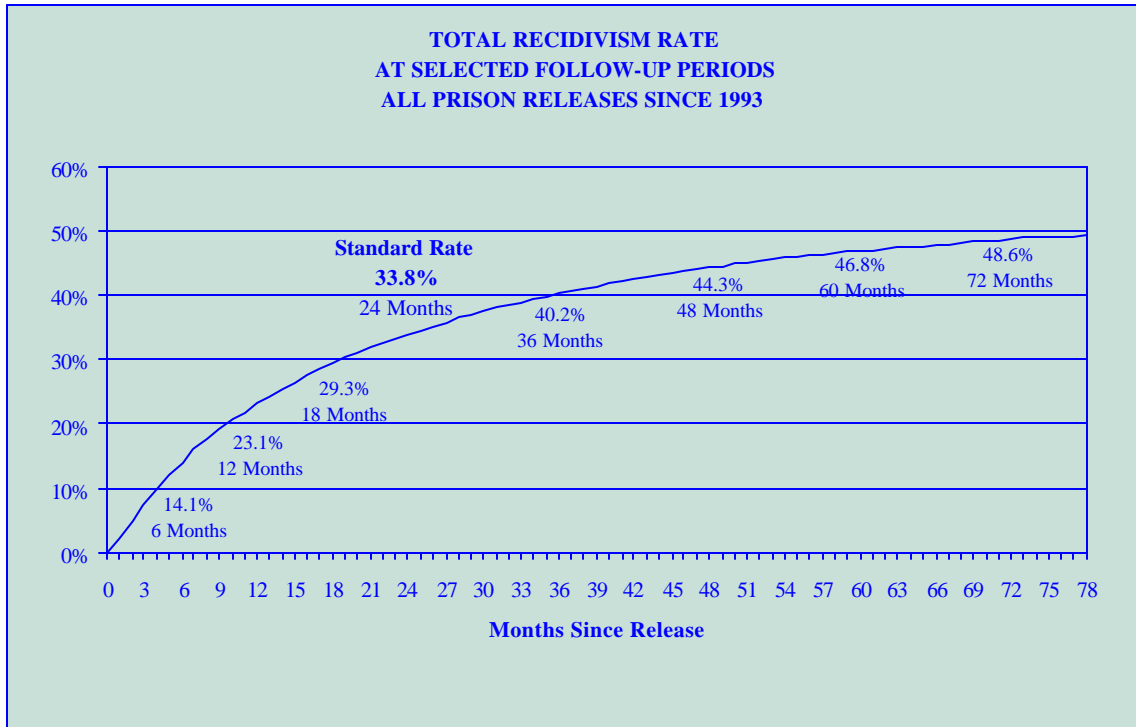
Two cohorts of released inmates are used to establish the Department's standard recidivism rate. The general recidivism rate of 33.8% is calculated for all inmates released since July 1993. The latest recidivism rate of 34.7% is calculated for inmates released during Fiscal Year 1996-97 (July through June), the most recent release cohort who all have a follow-up period of at least 24 months.

This report provides the latest recidivism rate because the public and policymakers often request the most recent available information. For information about what influences recidivism rates see [Factors Affecting Recidivism Rates](#). See the chart and table "Recidivism Rates by Release Year" in that section for more information on recidivism rates based on Fiscal Year release cohorts.

RECIDIVISM RATE CURVES



A useful way to display recidivism rates is to graph the total percentage of recidivists over the time since release from prison, creating a recidivism rate curve. The chart below provides an example.

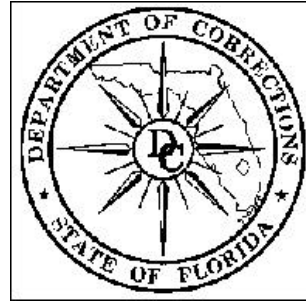


This chart displays the general recidivism rate for all offenders released since July 1993. The lower axis indicates the number of months (1-78) since release from prison. The side axis shows the percentage of inmates who recidivated. The graphed curve marks the percentage of total inmates released who reoffended over time.

For example, the standard recidivism rate (33.8%) is the value on the recidivism rate curve at 24 months after release. For convenience, recidivism rates at selected follow-up periods are noted on the chart: 6, 12, 18, 24, 36, 48, 60, and 72 months after release. This chart shows that recidivism rates increase most quickly immediately after release and grow more slowly as the time since release increases. In the first six months after release the recidivism rate grows to 14.1%, but between 24 and 36 months after release the rate grows only by 6.4%.

For information about what influences recidivism rates see [Factors Affecting Recidivism Rates](#). For information about recidivism rates based on measures other than conviction for a new offense see [Recidivism Rates Based on Rearrest](#).

FACTORS AFFECTING RECIDIVISM RATES



Scientific studies have documented that many factors contribute to recidivism rates. These include such personal characteristics as age, gender, race, length and severity of criminal history, education and skill levels, and conduct in prison. Other factors such as length of incarceration are believed to affect recidivism rates as well.

For public safety reasons, the public and policymakers routinely consider recidivism rates an important-if not paramount-measure of the corrections system's performance. Therefore, it is necessary to know how these factors affect recidivism rates so they can serve as a correct benchmark for measuring whether and how well policies or programs expected to reduce recidivism actually work.

This report does not evaluate the Department's performance based on recidivism rates. Instead, the report provides a proper context for understanding the results of evaluations that use recidivism rates to assess the Department's performance.

Combined Effect of Factors on Recidivism Rates

This study only includes factors for which the Department has data at the time an inmate is released from prison. This data is reliable, readily available, and should remain so over time. Among the factors analyzed, the following nine factors are significantly related to recidivism: age at release, prior recidivism, race, gender, education level, offense type, custody level at release, number of disciplinary reports received, and time served in prison. Available data is not sufficient to analyze post-release factors such as employment, drug and alcohol use, and the extent of formal and informal supervision which may also affect recidivism rates.

A good way to understand how much these factors, as a group, affect recidivism is to test how well they predict whether inmates recidivate at certain times after release. A standard cross validation technique was used to measure the predictive value of a statistical model incorporating these nine factors. The model was tested at three follow-up periods to ensure that its predictive value does not vary unacceptably across follow-up intervals. Knowing these nine factors our ability to predict whether or not an inmate would recidivate was improved as follows:

- 19.0 % at 18 months after release
- 22.8 % at 36 months after release
- 22.0 % at 60 months after release.

For more information on the statistical procedure used to evaluate this prediction model see the [Technical Appendix](#).

The Relative Influence of Factors on Recidivism Rates

The factors displayed in the charts and tables below are listed in order of their relative influence on recidivism rates for inmates released from our facilities, beginning with the most influential: age at release. The relative effect of these factors was determined using a statistical procedure (proportional hazards regression) that analyzes their respective effects on recidivism simultaneously. This allows us to know three things about these factors:

- whether a factor has a statistically significant effect on recidivism,
- whether one factor accounts for more variation in recidivism rates than others,
- whether and by how much each factor tends to raise or lower recidivism rates.

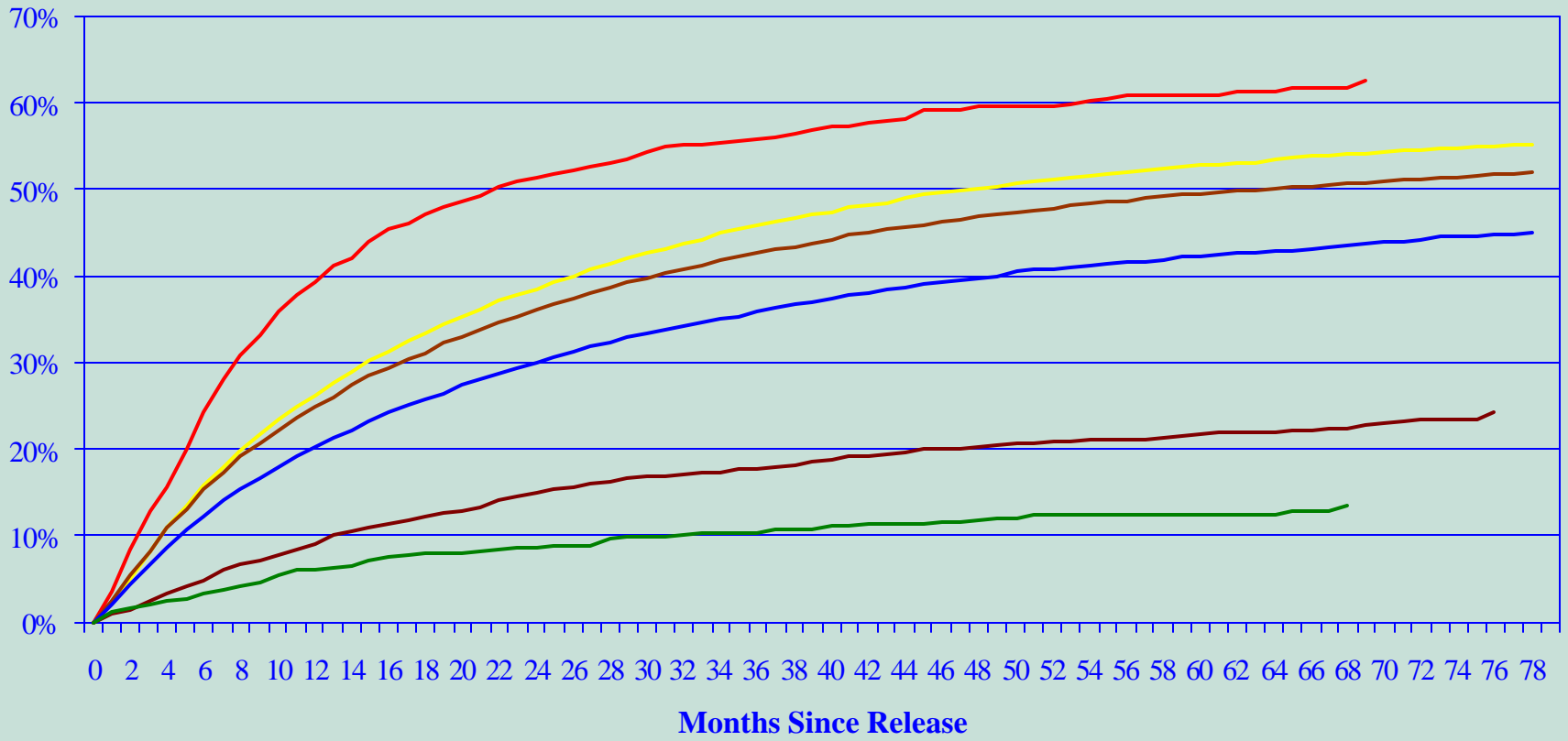
For more information on the methodology and statistical procedure used to measure these factors' relative influence on recidivism see the [Technical Appendix](#).

Recidivism Charts and Tables for Factors

The charts and tables below demonstrate how much each of nine factors, other than the year released, influence recidivism rates. Each curve chart shows the relationship between a factor or factors and recidivism rates over time. Actual recidivism rates for each chart appear in the associated table. The table provides data for selected follow-up periods from six months to six years after prison release. For an explanation of how to interpret these charts see [Recidivism Rate Curves](#).

RECIDIVISM RATES BY AGE AT RELEASE

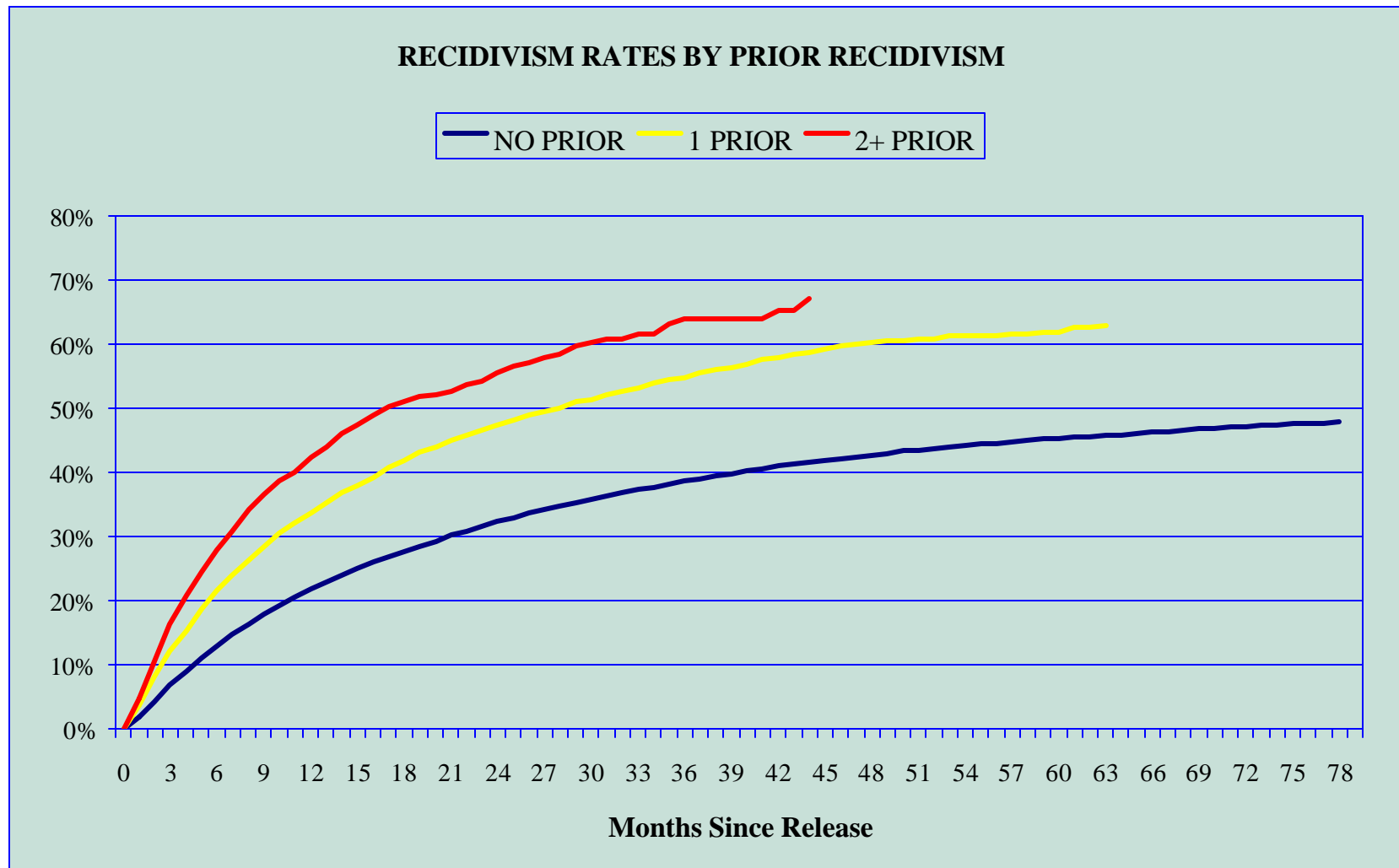
— UNDER 18 — 18-24 — 25-34 — 35-49 — 50-59 — 60+



- On average, an inmate's probability of reoffending drops by 2.1% for each year older the inmate is at release.
- Younger offenders reoffend at much higher rates than older offenders.

RECIDIVISM RATES BY AGE AT RELEASE

MONTHS SINCE RELEASE	AGE AT RELEASE						TOTAL
	UNDER 18	18-24	25-34	35-49	50-59	60+	
6	24.1%	15.8%	15.4%	12.3%	5.0%	3.2%	14.1%
12	39.4%	26.3%	24.8%	20.3%	9.2%	6.0%	23.1%
18	47.0%	33.4%	31.2%	25.8%	12.1%	7.9%	29.3%
24	51.3%	38.5%	36.0%	30.0%	15.0%	8.7%	33.8%
36	55.8%	45.7%	42.6%	35.9%	17.9%	10.3%	40.2%
48	59.5%	50.0%	46.8%	39.8%	20.3%	11.8%	44.3%
60	60.9%	52.8%	49.4%	42.3%	21.8%	12.3%	46.8%
72	NA	54.5%	51.1%	44.2%	23.4%	NA	48.6%

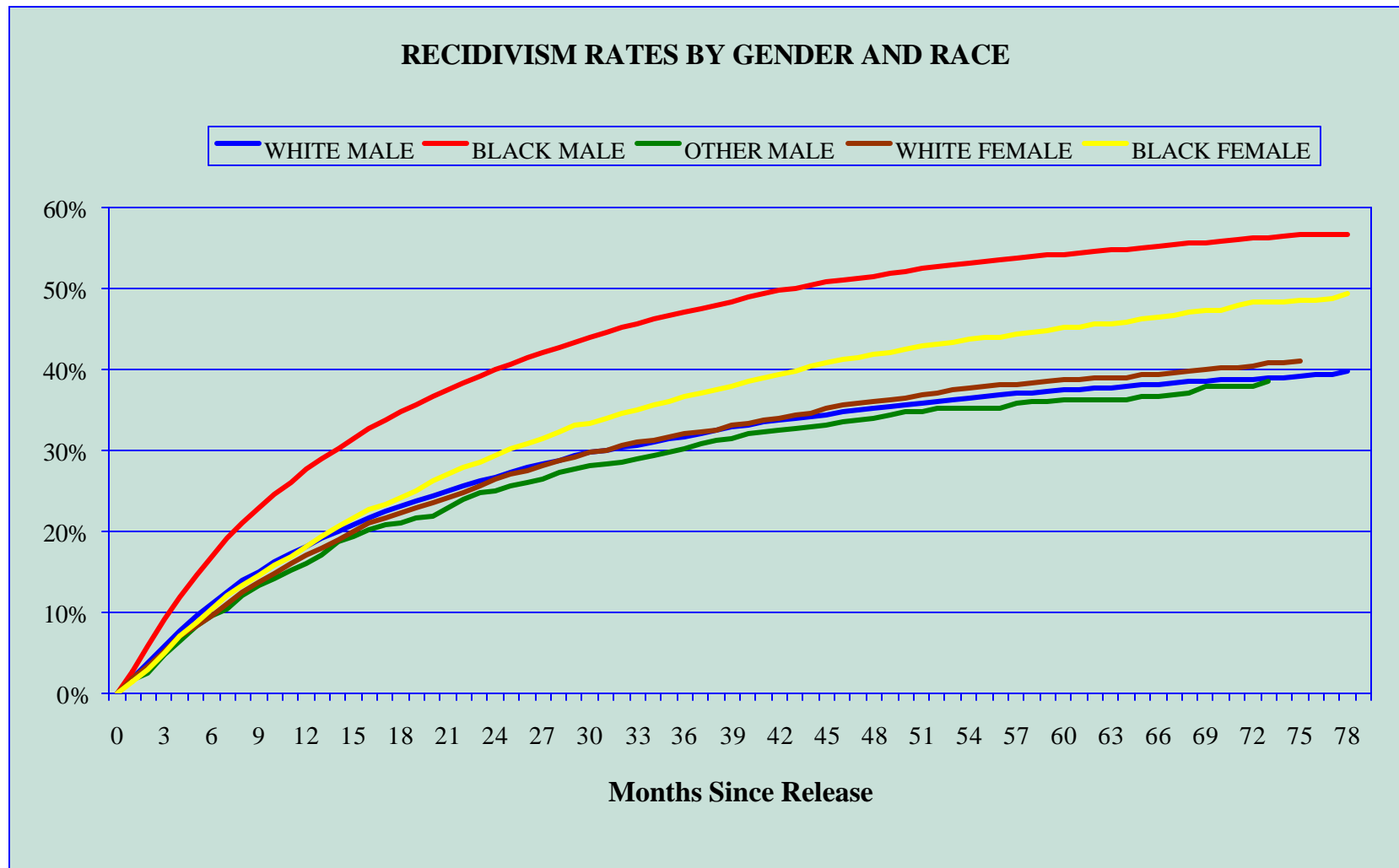


- On average, inmates who have recidivated at least once before are 58.1% more likely to reoffend than those who have not.
- For prison releases since 1993, inmates who recidivated previously do so again at higher rates than those without a prior recidivism event.

RECIDIVISM RATES BY PRIOR RECIDIVISM

MONTHS SINCE RELEASE	PRIOR RECIDIVISM			TOTAL
	NONE	1	2+	
6	13.1%	21.6%	27.8%	14.1%
12	21.8%	33.7%	42.3%	23.1%
18	27.8%	41.8%	51.1%	29.3%
24	32.3%	47.3%	55.6%	33.8%
36	38.6%	54.9%	63.9%	40.2%
48	42.7%	60.3%	NA	44.3%
60	45.4%	61.9%	NA	46.8%
72	47.2%	0.0%	NA	48.6%



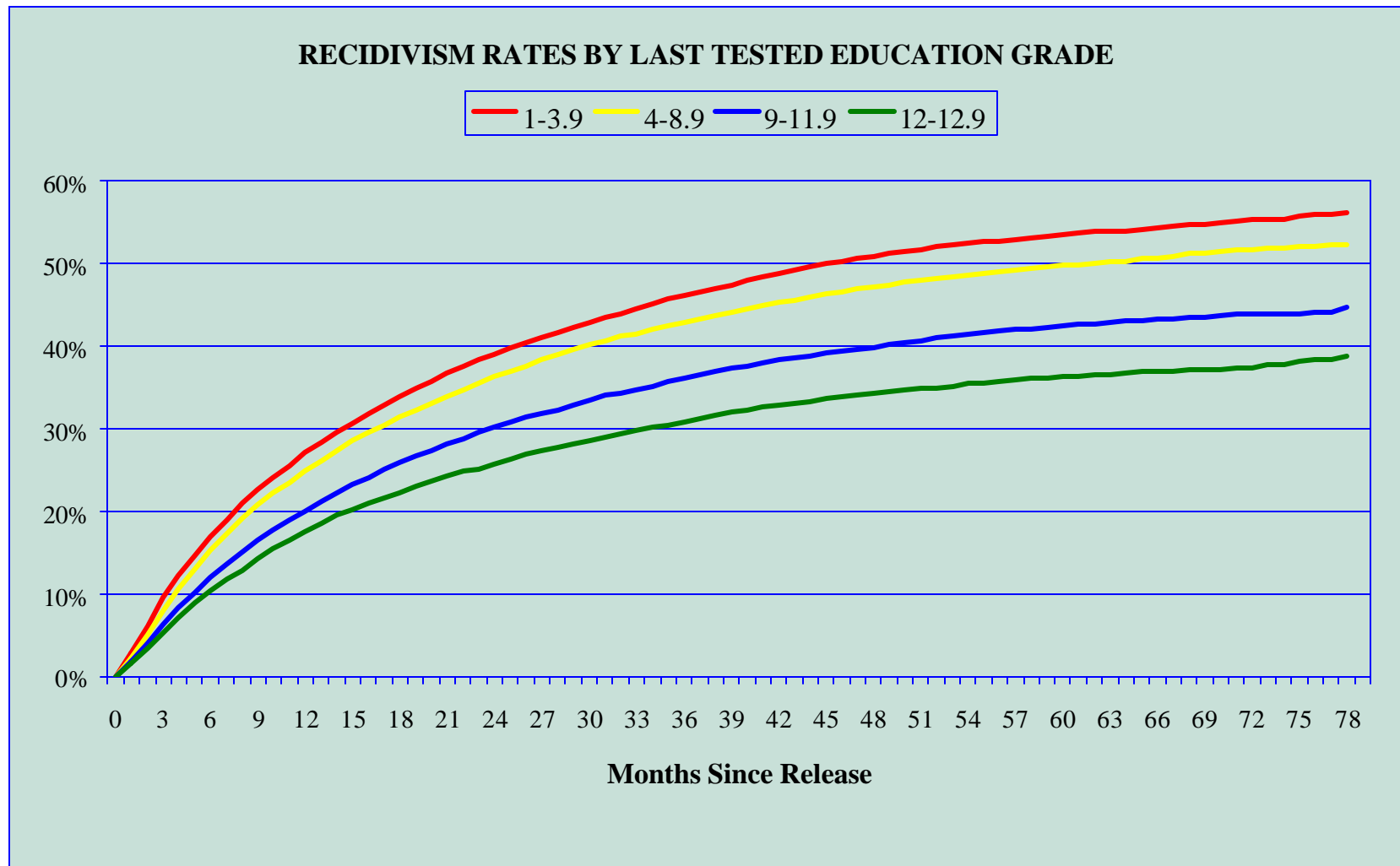


- On average, black inmates are 43.6% more likely to reoffend than non-blacks.
- On average, male inmates are 24.2% more likely to reoffend than females.
- Black males appear to recidivate at higher rates than white males.
- Some factor other than race may account for much of the difference between black and white male offenders' recidivism rates because the race difference is larger for males than for females.

RECIDIVISM RATES BY GENDER AND RACE

MONTHS SINCE RELEASE	GENDER AND RACE					TOTAL
	WHITE MALE	BLACK MALE	OTHER MALE	WHITE FEMALE	BLACK FEMALE	
6	11.1%	16.9%	9.5%	9.7%	10.4%	14.1%
12	18.2%	27.6%	15.9%	17.1%	18.2%	23.1%
18	23.1%	34.7%	21.1%	22.3%	24.2%	29.3%
24	26.8%	39.9%	25.0%	26.5%	29.5%	33.8%
36	31.8%	47.2%	30.3%	32.1%	36.7%	40.2%
48	35.2%	51.6%	34.0%	36.1%	41.8%	44.3%
60	37.4%	54.3%	36.3%	38.7%	45.2%	46.8%
72	38.8%	56.2%	37.9%	40.4%	48.3%	48.6%





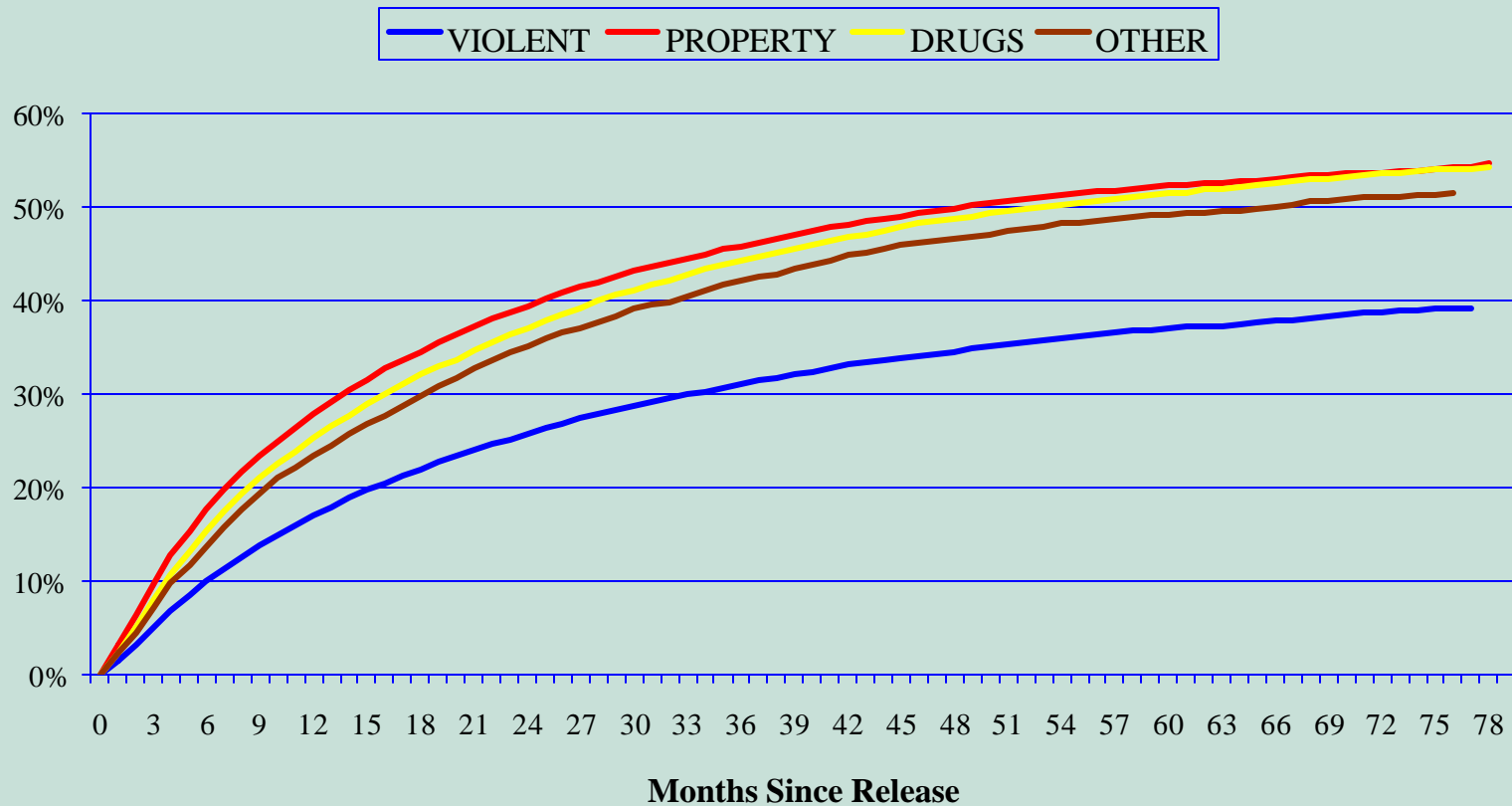
- On average, an inmate's probability of reoffending drops by 2.9% for each higher grade of adult basic education tested.
- Education grade level tests are given to all offenders entering prison. Test results are available whether or not an inmate received education programming in prison.

RECIDIVISM RATES BY EDUCATION GRADE LEVEL TESTED

MONTHS SINCE RELEASE	LAST TESTED LEVEL				TOTAL
	1 - 3.9	4 - 8.9	9 - 11.9	12+	
6	16.9%	15.4%	12.0%	10.4%	14.1%
12	27.1%	25.0%	20.1%	17.7%	23.1%
18	33.9%	31.4%	25.9%	22.3%	29.3%
24	39.1%	36.3%	30.2%	25.8%	33.8%
36	46.2%	43.0%	36.2%	31.0%	40.2%
48	50.9%	47.2%	40.0%	34.3%	44.3%
60	53.6%	49.8%	42.6%	36.4%	46.8%
72	55.3%	51.8%	43.9%	37.5%	48.6%



RECIDIVISM RATES BY RELEASE PRIMARY OFFENSE TYPE

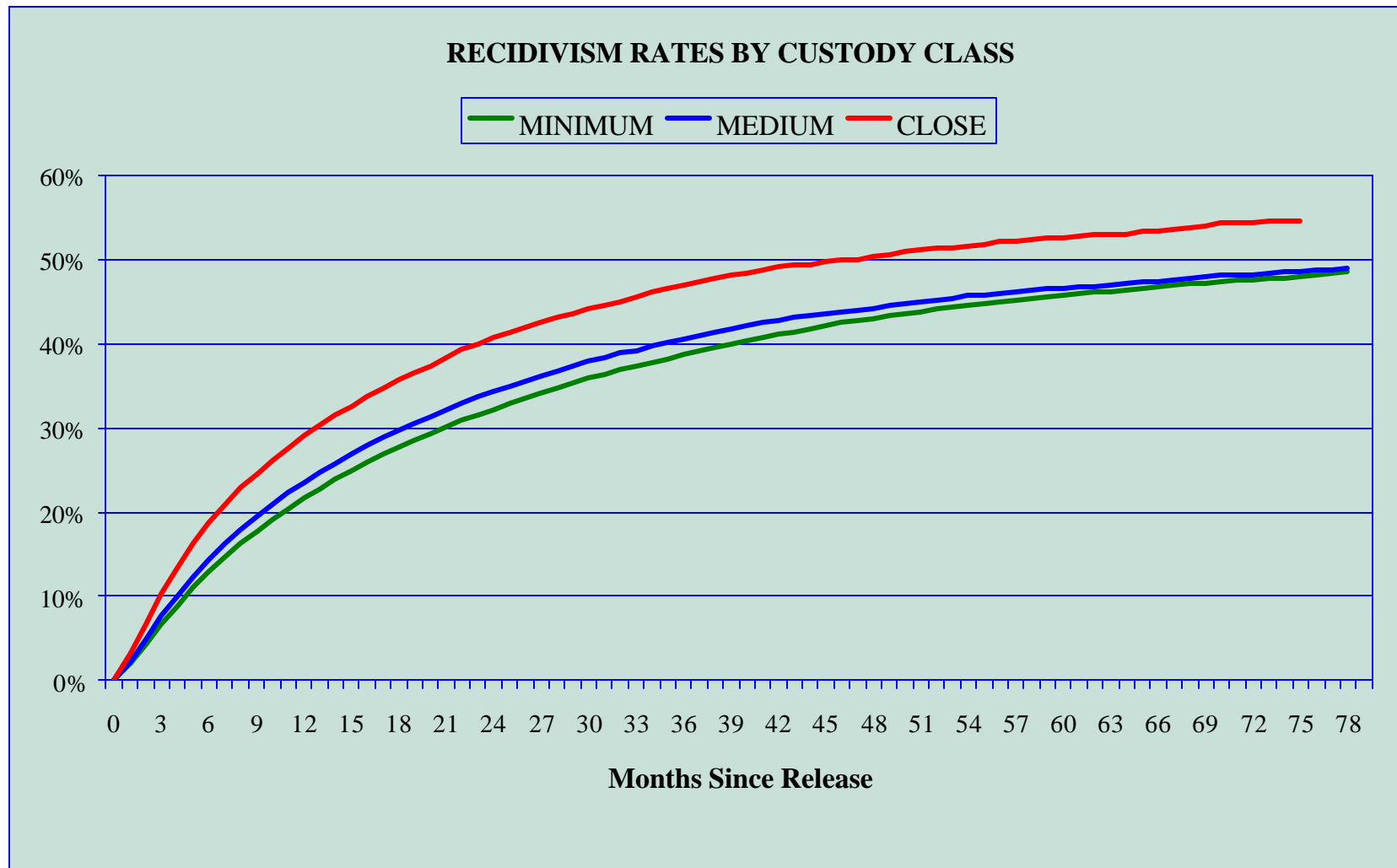


- On average, released inmates whose primary offense is a property offense are 13.9% more likely to reoffend than others.
- On average, released inmates whose primary offense is a violent offense are 31.9% less likely to reoffend than others.
- Property offenders recidivate slightly more than drug offenders. Both groups recidivate much more than offenders imprisoned for violent offenses.

RECIDIVISM RATES BY PRIMARY OFFENSE TYPE

MONTHS SINCE RELEASE	OFFENSE TYPE				TOTAL
	VIOLENT	PROPERTY	DRUGS	OTHER	
6	9.8%	17.6%	15.3%	13.6%	14.1%
12	16.9%	27.9%	25.2%	23.3%	23.1%
18	22.0%	34.5%	32.0%	29.7%	29.3%
24	25.7%	39.4%	37.1%	35.0%	33.8%
36	31.0%	45.8%	44.3%	42.1%	40.2%
48	34.5%	49.9%	48.7%	46.6%	44.3%
60	37.0%	52.3%	51.4%	49.2%	46.8%
72	38.7%	53.7%	53.5%	51.1%	48.6%





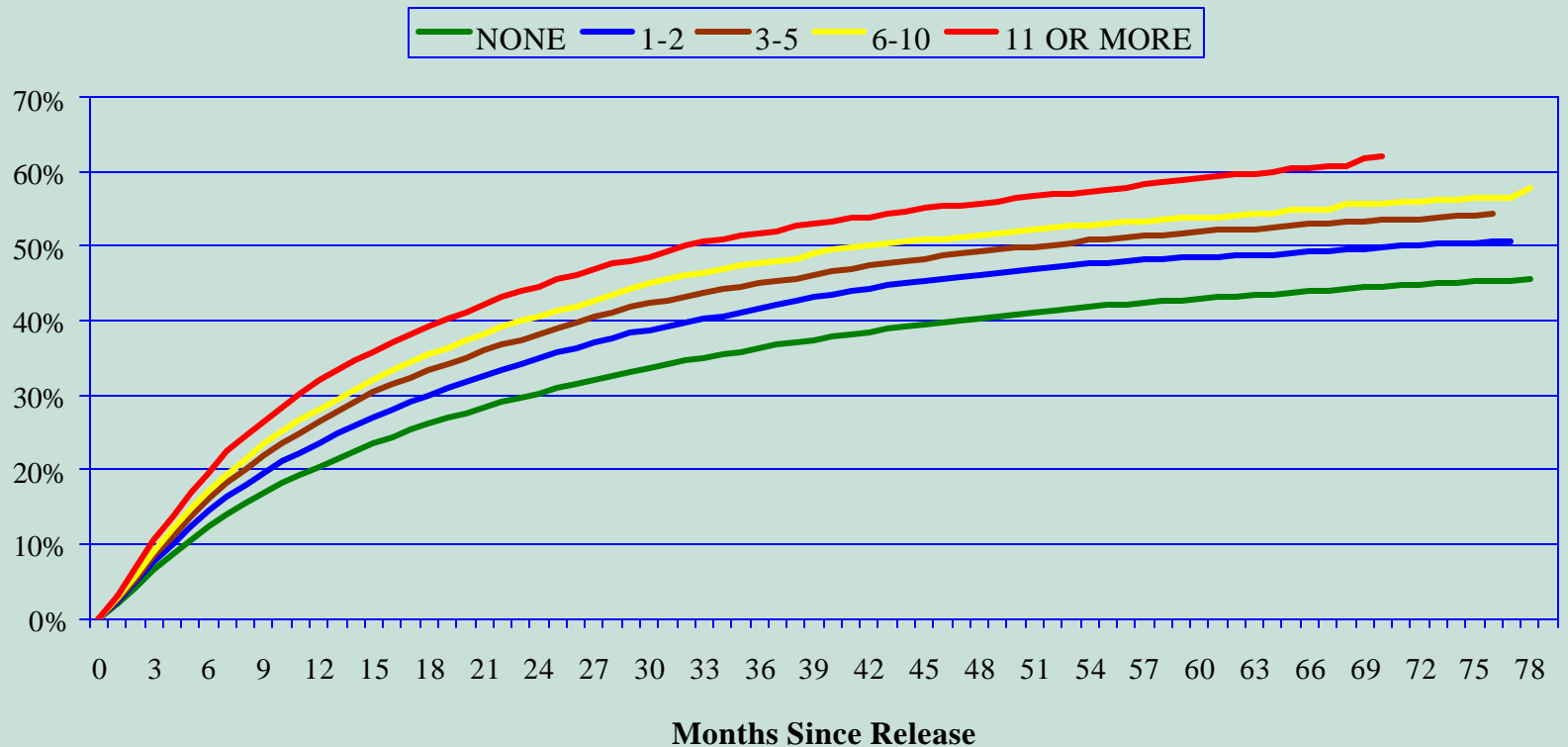
- On average, inmates released directly from close custody are 10.8% more likely to reoffend than others.
- Those released from medium and minimum custody recidivate at similar rates after release.
- The higher recidivism rates for close custody releases may result from some other underlying factor, such as limited participation in some kinds of programming while in close custody or because those still in close custody at release are more violent and disruptive individuals.

RECIDIVISM RATES BY RELEASE CUSTODY CLASS

MONTHS SINCE RELEASE	CUSTODY AT RELEASE			TOTAL
	MINIMUM	MEDIUM	CLOSE	
6	13.0%	14.3%	18.7%	14.1%
12	21.6%	23.5%	29.1%	23.1%
18	27.7%	29.7%	35.7%	29.3%
24	32.2%	34.3%	40.7%	33.8%
36	38.7%	40.6%	47.1%	40.2%
48	43.1%	44.2%	50.4%	44.3%
60	45.8%	46.7%	52.7%	46.8%
72	47.7%	48.2%	54.4%	48.6%



RECIDIVISM RATES BY TOTAL DISCIPLINARY REPORTS



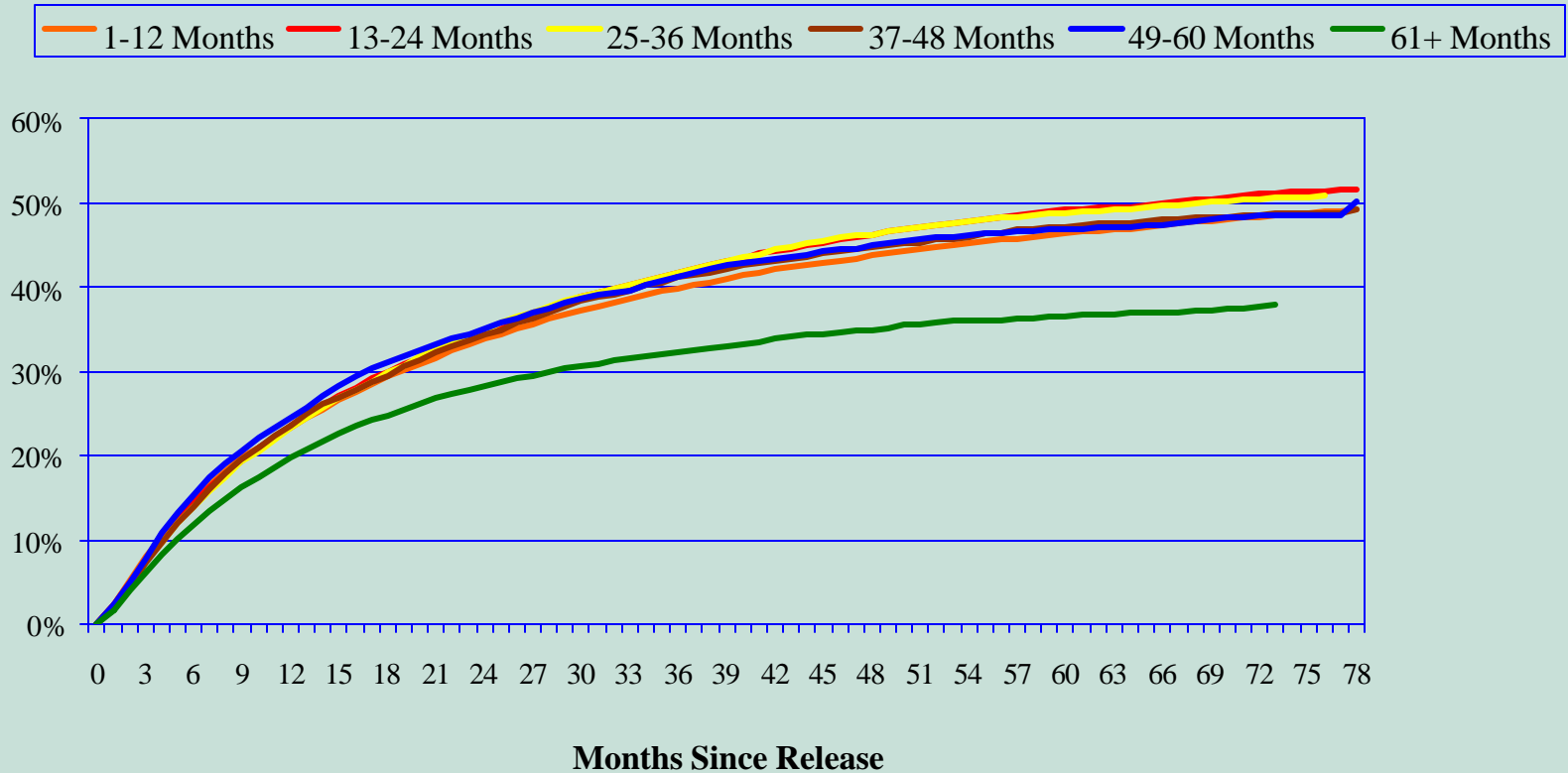
- On average, an inmate's probability of reoffending rises by 1.6% for each additional disciplinary report received while in prison.
- This suggests that inmates who break the rules more often while in prison are more likely to do so after release than those inmates who abide by the rules while in prison.

RECIDIVISM RATES BY DISCIPLINARY REPORTS

MONTHS SINCE RELEASE	TOTAL REPORTS RECEIVED					TOTAL
	NONE	1 - 2	3 - 5	6 - 10	11+	
6	12.4%	14.5%	16.0%	17.2%	19.7%	14.1%
12	20.5%	23.6%	26.5%	28.2%	32.2%	23.1%
18	26.1%	30.1%	33.3%	35.4%	39.1%	29.3%
24	30.4%	34.9%	38.3%	40.6%	44.7%	33.8%
36	36.3%	41.8%	45.0%	47.8%	51.8%	40.2%
48	40.3%	46.1%	49.3%	51.4%	55.7%	44.3%
60	43.0%	48.5%	51.9%	53.9%	59.3%	46.8%
72	44.9%	50.1%	53.6%	55.9%	NA	48.6%



RECIDIVISM RATES BY MONTHS SERVED IN PRISON



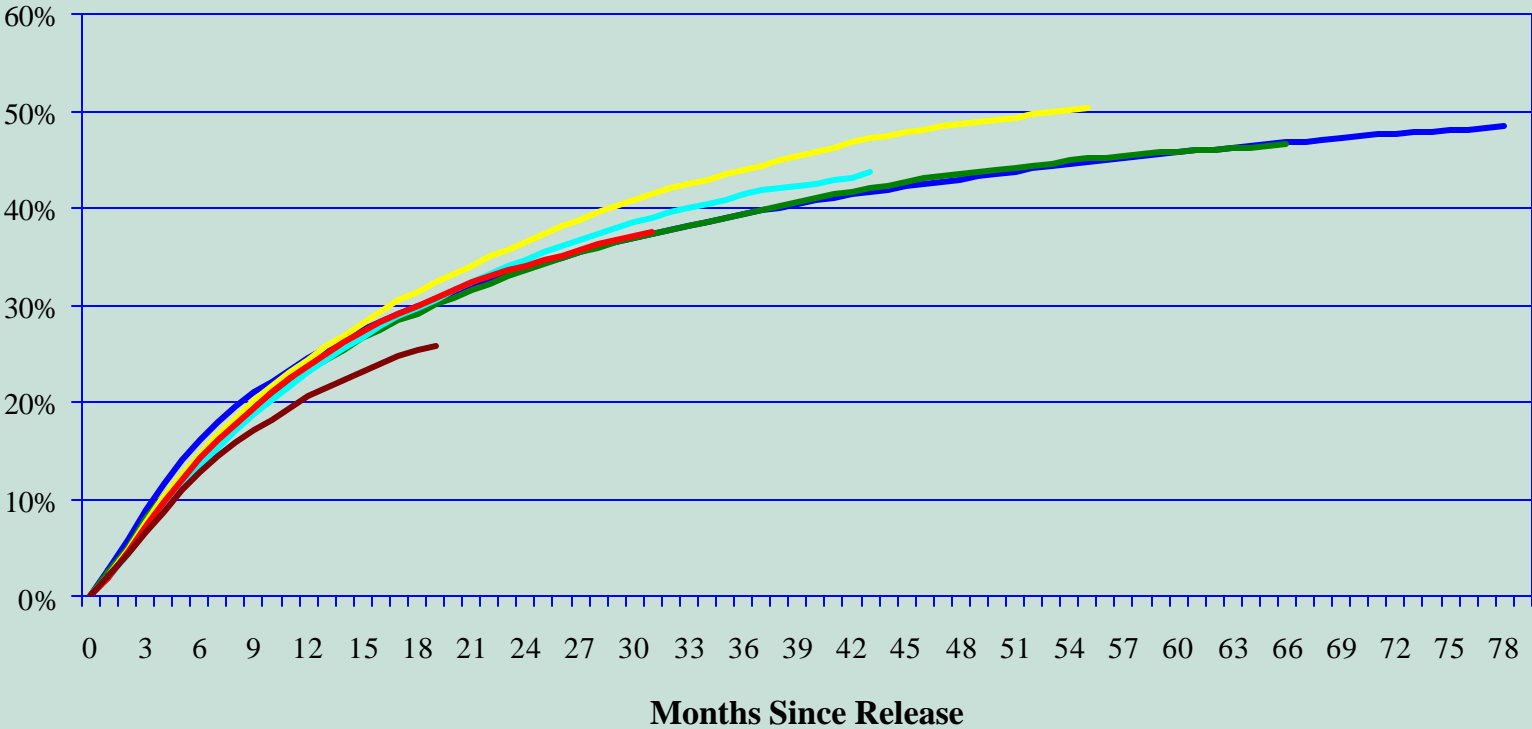
- On average, an inmate's probability of reoffending drops by 1.2% for each additional year spent in prison.
- The somewhat lower recidivism rate for inmates who spent more than five years in prison may appear because this group contains a higher percentage of older inmates, who reoffend less than younger inmates.

RECIDIVISM RATES BY TIME SERVED IN PRISON

MONTHS SINCE RELEASE	MONTHS SERVED IN PRISON						TOTAL
	1-12	13-24	25-36	37-48	49-60	61+	
6	14.7%	14.4%	14.0%	14.0%	15.4%	11.8%	14.1%
12	23.4%	23.6%	23.3%	23.7%	24.6%	19.9%	23.1%
18	29.4%	30.0%	29.9%	29.6%	31.1%	24.9%	29.3%
24	33.9%	34.8%	35.0%	34.4%	35.1%	28.2%	33.8%
36	39.9%	41.7%	41.7%	41.2%	41.3%	32.3%	40.2%
48	43.8%	46.3%	46.3%	44.8%	44.9%	35.0%	44.3%
60	46.4%	49.1%	48.8%	47.2%	47.0%	36.6%	46.8%
72	48.3%	51.1%	50.5%	48.5%	48.4%	37.7%	48.6%

RECIDIVISM RATES BY RELEASE YEAR

93-94 94-95 95-96 96-97 97-98 98-99



- Recidivism rates do not vary much for inmates released during different fiscal years (July - June).
- The shape of the recidivism rate curves are similar for inmates released each year.
- Since recidivism rates are not changing much from year to year they may have limited value as annual performance measures.

RECIDIVISM RATES BY YEAR RELEASED

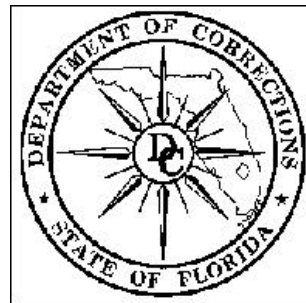
		FISCAL YEAR RELEASED						TOTAL	
		FY 93-94	FY 94-95	FY 95-96	FY 96-97	FY 96-97	FY 96-97		
MONTHS SINCE RELEASE	6	Rate	16.1%	14.5%	14.8%	13.5%	14.2%	12.8%	14.1%
			Recidivists	3,280	2,431	2,619	2,572	2,565	2,304
		Released	20,367	16,809	17,748	18,983	18,049	18,025	**
12	Rate	24.6%	23.3%	24.4%	23.0%	23.8%	20.7%	23.1%	
	Recidivists	5,002	3,918	4,336	4,375	4,300	*	*	
	Released	20,367	16,809	17,748	18,983	18,049	**	**	
18	Rate	30.0%	29.2%	31.4%	29.7%	30.0%	25.4%	29.3%	
	Recidivists	6,100	4,903	5,578	5,640	5,420	*	*	
	Released	20,367	16,809	17,748	18,983	18,049	**	**	
24	Rate	33.9%	33.6%	36.6%	34.7%	34.1%	NA	33.8%	
	Recidivists	6,907	5,282	6,496	6,596	*		*	
	Released	20,367	16,809	17,748	18,983	**		**	
36	Rate	39.4%	39.5%	43.9%	41.4%	NA	NA	40.2%	
	Recidivists	8,027	6,639	7,800	*			*	
	Released	20,367	16,809	17,748	**			**	
48	Rate	43.0%	43.5%	48.6%	NA	NA	NA	44.3%	
	Recidivists	8,755	7,310	*				*	
	Released	20,367	16,809	**				**	
60	Rate	45.8%	45.9%	NA	NA	NA	NA	46.8%	
	Recidivists	9,320	*					*	
	Released	20,367	**					**	
72	Rate	47.7%	NA	NA	NA	NA	NA	48.6%	
	Recidivists	*						*	
	Released	**						**	

Note: Rates without reported numbers of recidivists are estimates based on partial results.

* Incomplete recidivist counts are available for this full follow-up period.

** Not all released offenders in the category have this full follow-up period.

RECIDIVISM RATES BASED ON REARREST



Recidivism rates for this report are calculated by measuring the time between prison release and the date a new offense is committed. These reoffense dates are the result of a conviction for a new crime.

Scientific studies have used two other types of data to measure recidivism: **arrest** and **return to prison**. Each of these types of data has merit for measuring recidivism for particular purposes, and each has limitations as a data source. For example, arrest data are useful for focusing on how fast and often released inmates have contact with the criminal justice system; but an arrest alone does not mean a released inmate has committed a new serious offense. Return to prison data are useful for analyzing the impact recidivism has on corrections resources, but some inmates return only for noncriminal violations of supervision conditions and less serious new offenses may not result in reincarceration.

Generally, recidivism rates are highest when measured by rearrest and lowest when measured by return to prison. The Department uses reoffense (reconviction) data to measure recidivism because it captures only new serious offenses and all such offenses.

The chart below displays general recidivism rates for all inmates released since July 1993, as measured by rearrest and reconviction. For convenience, recidivism rates at selected follow-up periods are noted on the chart. This chart shows that rearrest and reconviction rates follow similar patterns, although rearrest occurs far more frequently than reconviction.

For more information on the data and methodology used to calculate rearrest rates for this report see the [Technical Appendix](#).

Rearrest and Reoffense Rates for Prison Releasees Inmates Released from January 1993 through July 2000

